



LE SOCIETY'S

P. C. JABIN SCIENCE COLLEGE,

AUTONOMOUS COLLEGE, CPE PHASE -III

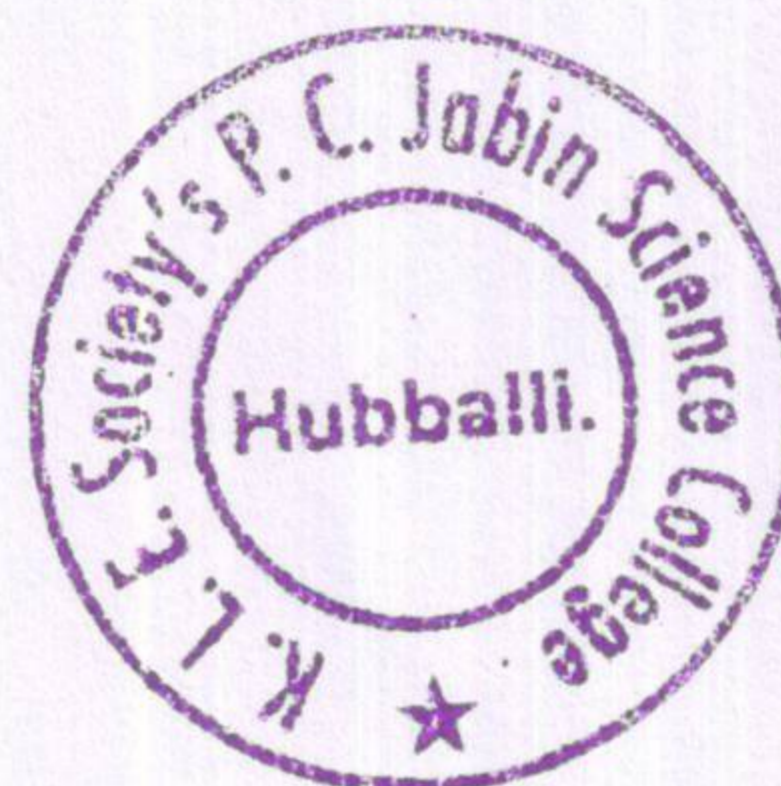
AFFILIATED TO KARNATAK UNIVERSITY DHARWAD
APPROVED BY UNIVERSITY GRANTS COMMISSION, NEW DELHI AND
GOVERNMENT OF KARNATAKA

Accredited at 'A' Grade by NAAC
VIDYANAGAR, HUBBALLI-580031

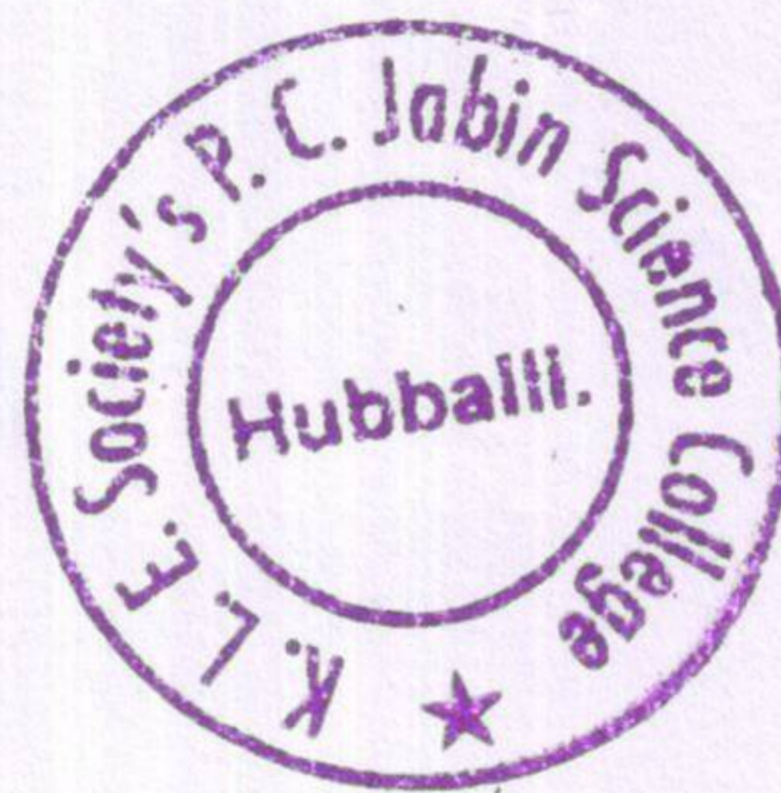
INTERNAL QUALITY ASSURANCE CELL

STUDENT SATISFACTION SURVEY ON TEACHING LEARNING PROCESS 2020-21

1. How much of the syllabus was covered in the class?
 - 4 - 85 to 100%
 - 3 - 70 to 84%
 - 2 - 55 to 69%
 - 1-30 to 54%
 - 0 -Below 30%
2. How well did the teachers prepare for the classes?
 - 4 -Thoroughly
 - 3 - Satisfactorily
 - 2 - Poorly
 - 1 - Indifferently
 - 0 - Won't teach at all
3. How well were the teachers able to communicate?
 - 4 - Always effective
 - 3 - Sometimes effective
 - 2 - Just satisfactorily
 - 1- Generally ineffective
 - 0- Very poor communication
4. The teacher's approach to teaching can best be described as
 - 4- Excellent
 - 3 — Very good
 - 2 — Good
 - 1 - Fair
 - 0- Poor
5. Fairness of the internal evaluation process by the teachers.
 - 4 - Always fair
 - 3 - Usually fair
 - 2 — Sometimes unfair
 - 1 - Usually unfair
 - 0 – Unfair
6. Was your performance in assignments discussed with you?
 - 4 — Every time
 - 3 - Usually
 - 2 - Occasionally/Sometimes
 - 1 - Rarely
 - 0- Never



7. The institute takes active interest in promoting internship, student exchange, field visit opportunities for students.
- 4 - Regularly
 - 3 - Often
 - 2 - Sometimes
 - 1 - Rarely
 - 0- Never
8. The teaching and mentoring process in your institution facilitates you in cognitive, social and emotional growth.
- 4 - Significantly
 - 3 - Very well
 - 2 - Moderately
 - 1 - Marginally
 - 0 -Not at all
9. The institution provides multiple opportunities to learn and grow.
- 4 - Strongly agree
 - 3 - Agree
 - 2 - Neutral
 - 1 - Disagree
 - 0- Strongly disagree
10. Teachers inform you about your expected competencies, course outcomes and programme outcomes.
- 4 - Every time
 - 3 - Usually
 - Occasionally/Sometimes
 - 1 - Rarely
 - 0 - Never
11. Your mentor does a necessary follow-up with an assigned task to you.
- 4 - Every time
 - 3 - Usually
 - 2 - Occasionally/Sometimes
 - 1 - Rarely
 - 0 - I don't have a mentor
12. The teachers illustrate the concepts through examples and applications.
- 4 - Every time
 - 3 - Usually
 - 2 - Occasionally/Sometimes
 - 1- Rarely
 - 0 - Never





LE SOCIETY'S

P. C. JABIN SCIENCE COLLEGE,

AUTONOMOUS COLLEGE, CPE PHASE -III

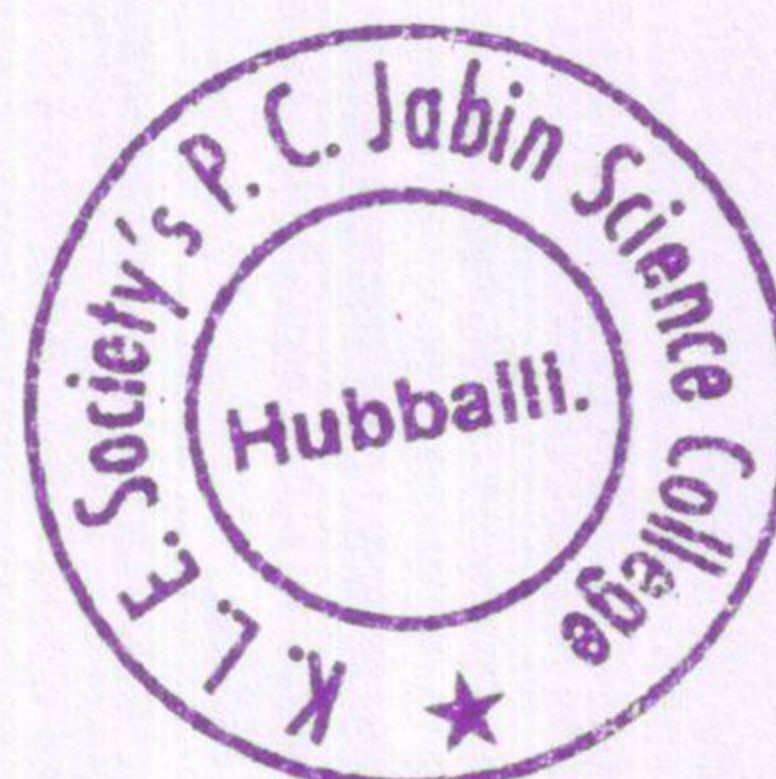
AFFILIATED TO KARNATAK UNIVERSITY DHARWAD
APPROVED BY UNIVERSITY GRANTS COMMISSION, NEW DELHI AND
GOVERNMENT OF KARNATAKA

Accredited at 'A' Grade by NAAC

VIDYANAGAR, HUBBALLI-580031

INTERNAL QUALITY ASSURANCE CELL

13. The teachers identify your strengths and encourage you with providing right level of challenges.
- 4 - Fully
 - 3 - Reasonably
 - 2 - Partially
 - 1 - Slightly
 - 0 - Unable to
14. Teachers are able to identify your weaknesses and help you to overcome them.
- 4 - Every time
 - 3 - Usually
 - 2 - Occasionally/Sometimes
 - 1 - Rarely
 - 0 - Never
15. The institution makes effort to engage students in the monitoring, review and continuous quality improvement of the teaching learning process.
- 4 - Strongly agree
 - 3 - Agree
 - 2 - Neutral
 - 1 - Disagree
 - 0 - Strongly disagree
16. The institute/ teachers use student centric methods, such as experiential learning, participative learning and problem solving methodologies for enhancing learning experiences.
- 4 - To a great extent
 - 3 - Moderate
 - 2 - Some what
 - 1 - Very little
 - 0 - Not at all
17. Teachers encourage you to participate in extracurricular activities.
- 4 - Strongly agree
 - 3 - Agree
 - 2 - Neutral
 - 1 - Disagree
 - 0 - Strongly disagree





LE SOCIETY'S

P. C. JABIN SCIENCE COLLEGE,

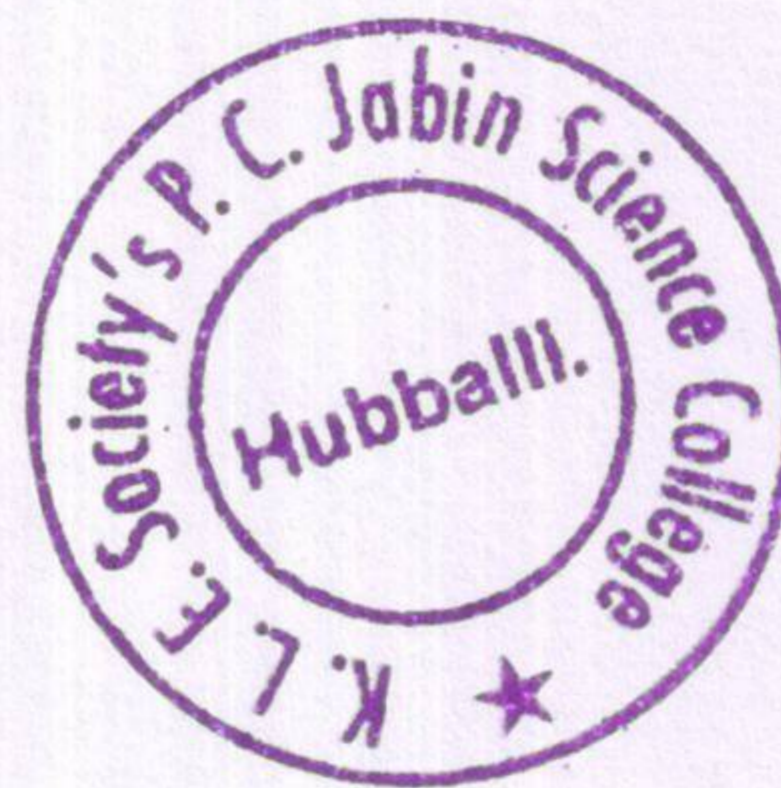
AUTONOMOUS COLLEGE, CPE PHASE -III

AFFILIATED TO KARNATAK UNIVERSITY DHARWAD
APPROVED BY UNIVERSITY GRANTS COMMISSION, NEW DELHI AND
GOVERNMENT OF KARNATAKA

Accredited at 'A' Grade by NAAC
VIDYANAGAR, HUBBALLI-580031

INTERNAL QUALITY ASSURANCE CELL

18. Efforts are made by the institute/ teachers to inculcate soft skills, life skills and employability skills to make you ready for the world of work. 4 - To a great extent
3 - Moderate
2 - Some what
1 - Very little
0 - Not at all
19. What percentage of teachers use ICT tools such as LCD projector, Multimedia, etc. while teaching.
4 - Above 90%
3 - 70 - 89%
2 - 50 - 69%
1 - 30 - 49%
0 - Below 29%
20. The overall quality of teaching-learning process in your institute is very good.
4 -Strongly agree
3 - Agree
2 - Neutral
1 - Disagree
0 - Strongly disagree
21. Give three observation / suggestions to improve the overall teaching - learning experience in your institution, a) b) c)





LE SOCIETY'S

P. C. JABIN SCIENCE COLLEGE,

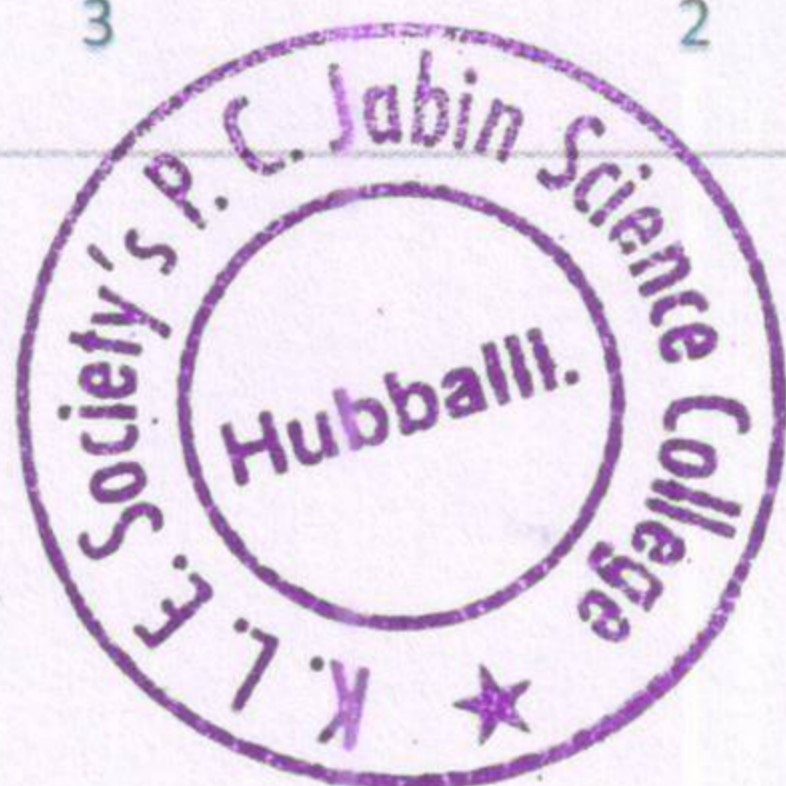
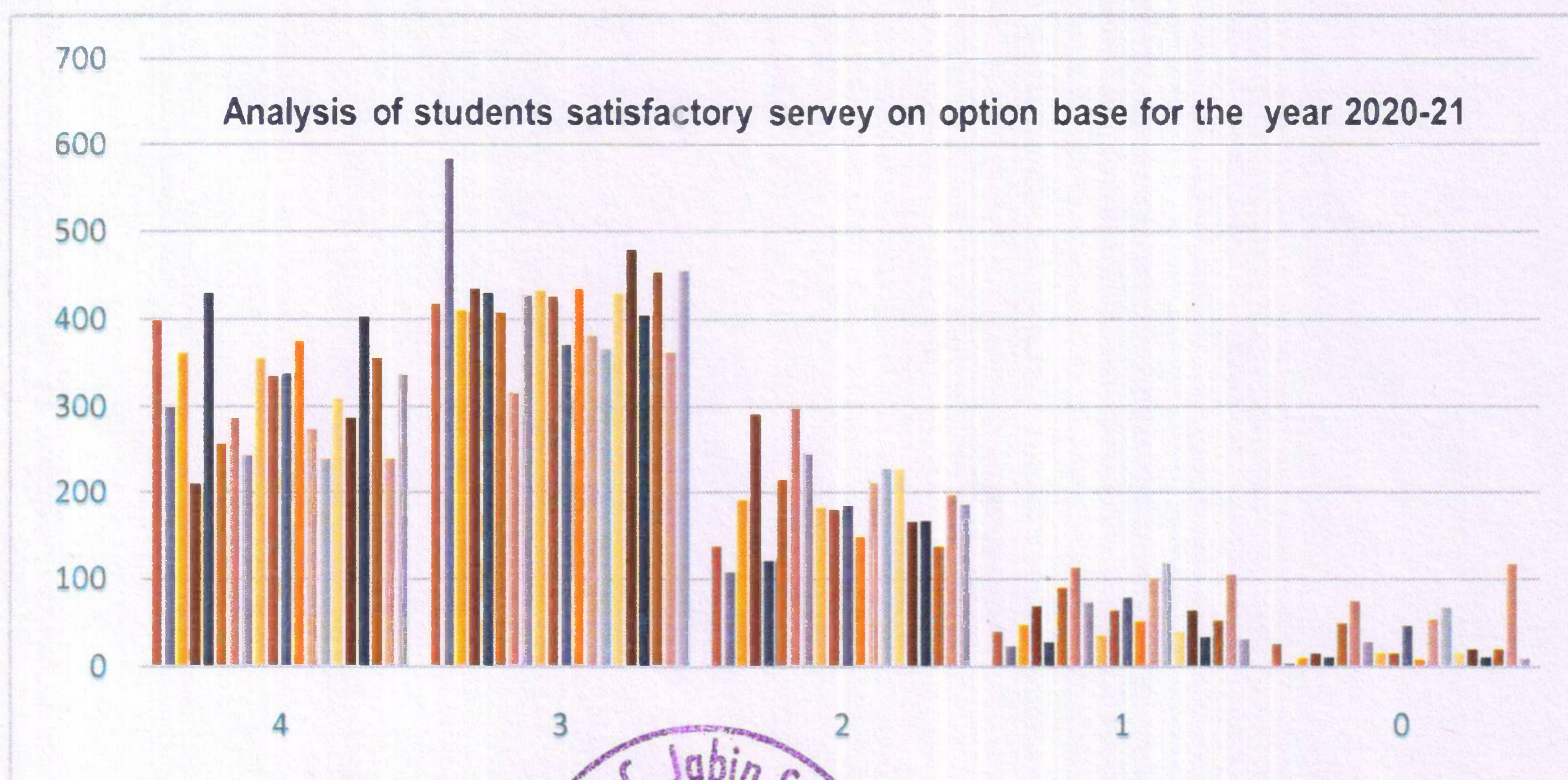
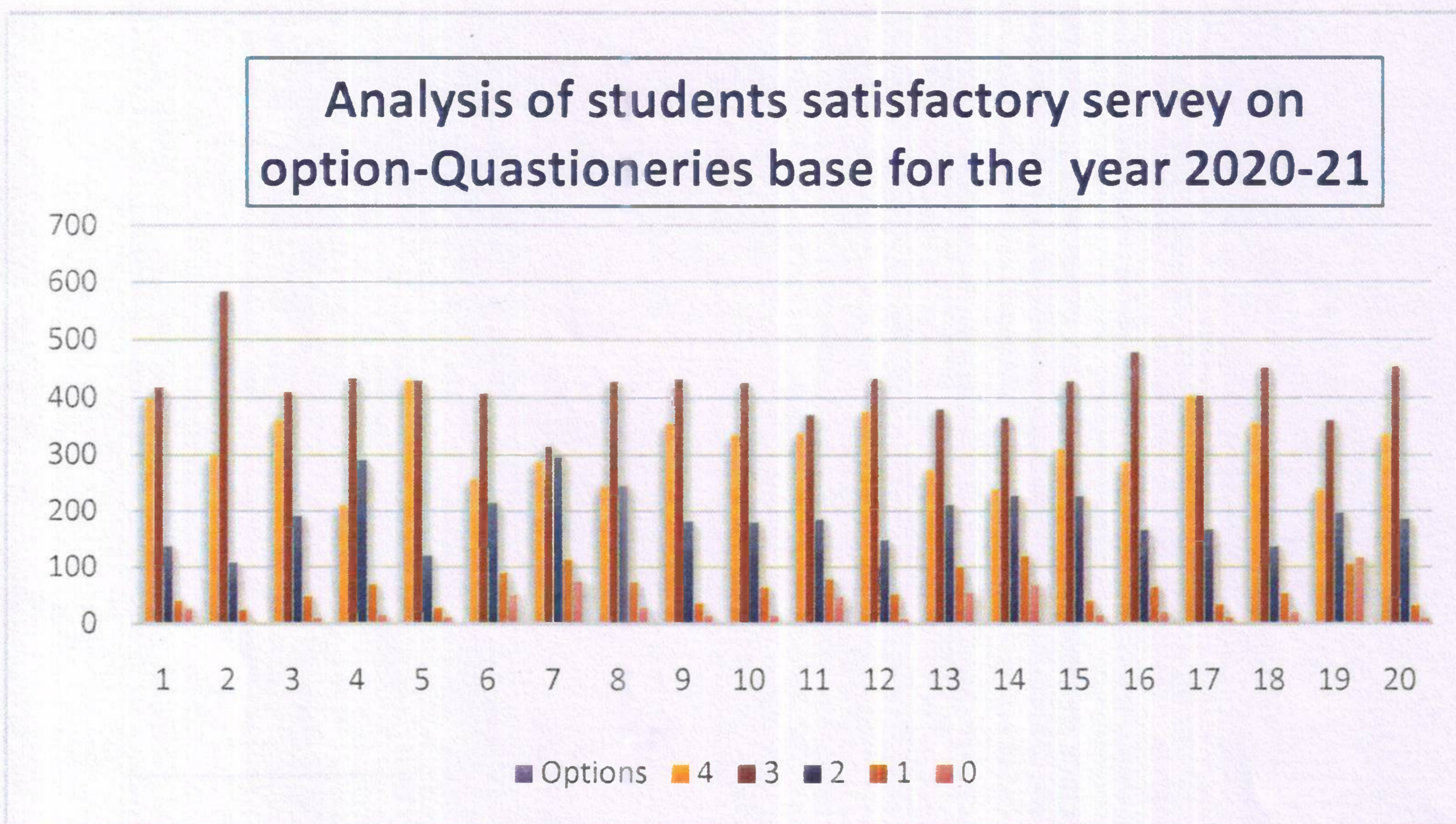
AUTONOMOUS COLLEGE, CPE PHASE -III

AFFILIATED TO KARNATAK UNIVERSITY DHARWAD
 APPROVED BY UNIVERSITY GRANTS COMMISSION, NEW DELHI AND
 GOVERNMENT OF KARNATAKA

Accredited at 'A' Grade by NAAC
VIDYANAGAR, HUBBALLI-580031

INTERNAL QUALITY ASSURANCE CELL

GRAPHICAL REPRESENTATION OF THE ANALYSIS REPORT FOR THE ACADEMIC
 YEAR 2020-21





LE SOCIETY'S

P. C. JABIN SCIENCE COLLEGE,

AUTONOMOUS COLLEGE, CPE PHASE -III

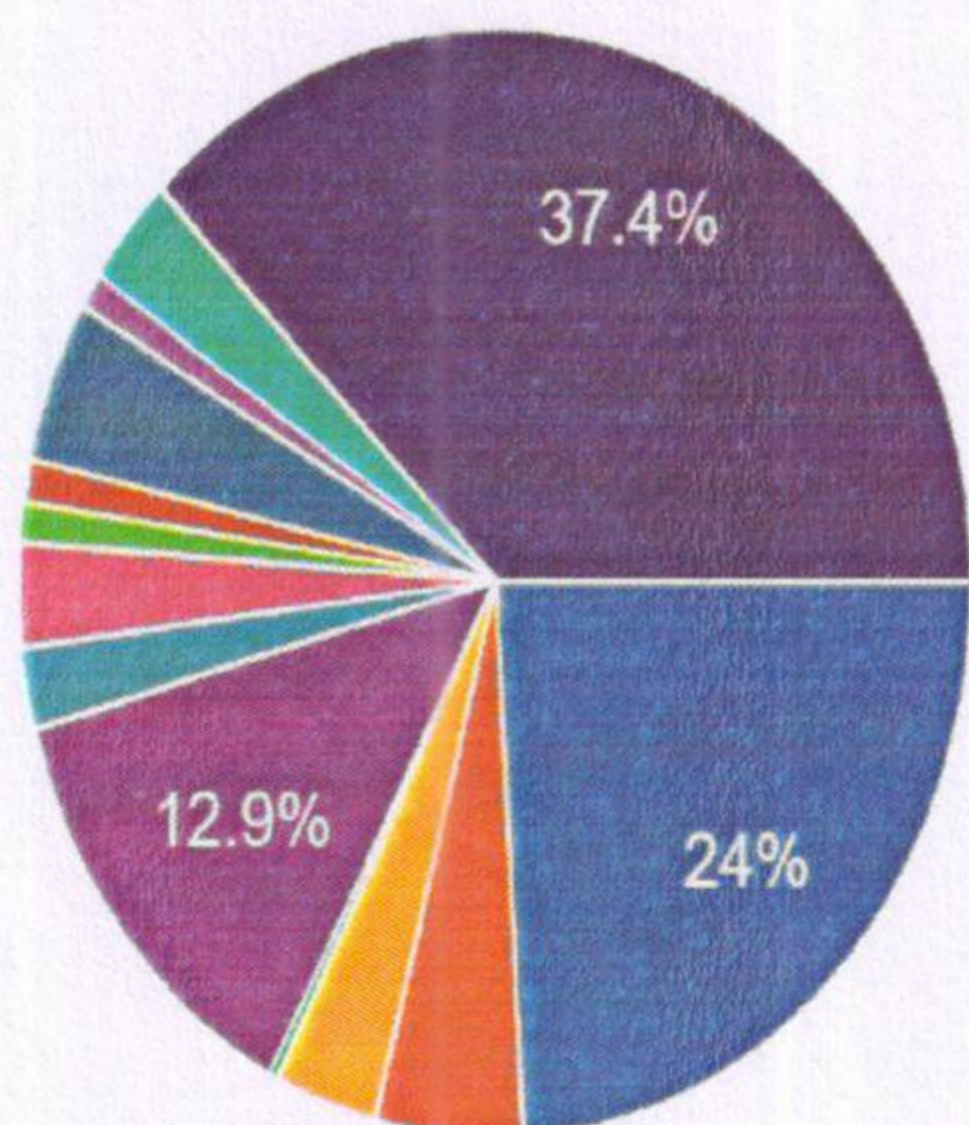
AFFILIATED TO KARNATAK UNIVERSITY DHARWAD
APPROVED BY UNIVERSITY GRANTS COMMISSION, NEW DELHI AND
GOVERNMENT OF KARNATAKA

Accredited at 'A' Grade by NAAC
VIDYANAGAR, HUBBALLI-580031

INTERNAL QUALITY ASSURANCE CELL

Program

1,020 responses

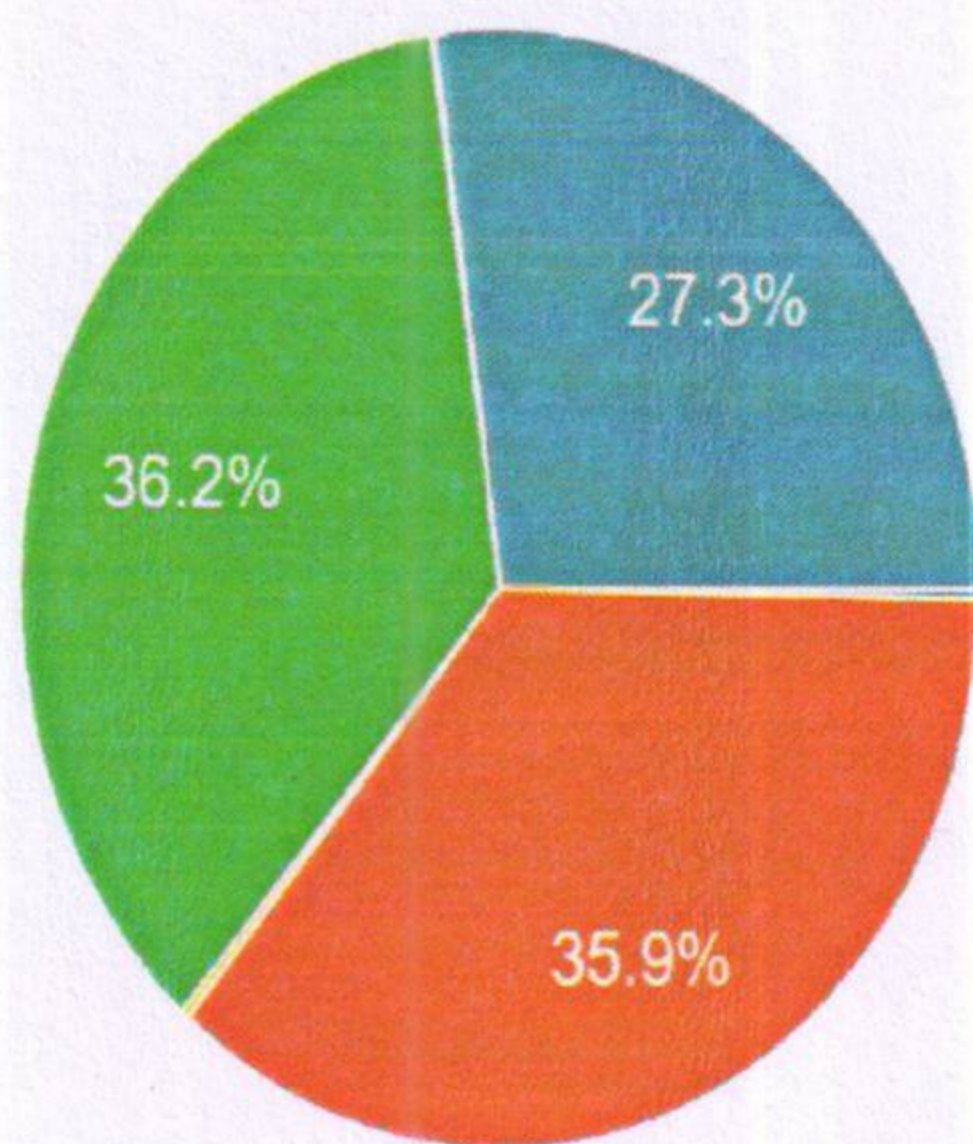


- B.Sc. PCM
- B.Sc. PME
- B.Sc. PMS
- B.Sc. CMS
- B.Sc. CBZ
- B.Sc. CBBt
- B.Sc. CZBt
- B.Sc. MSCs

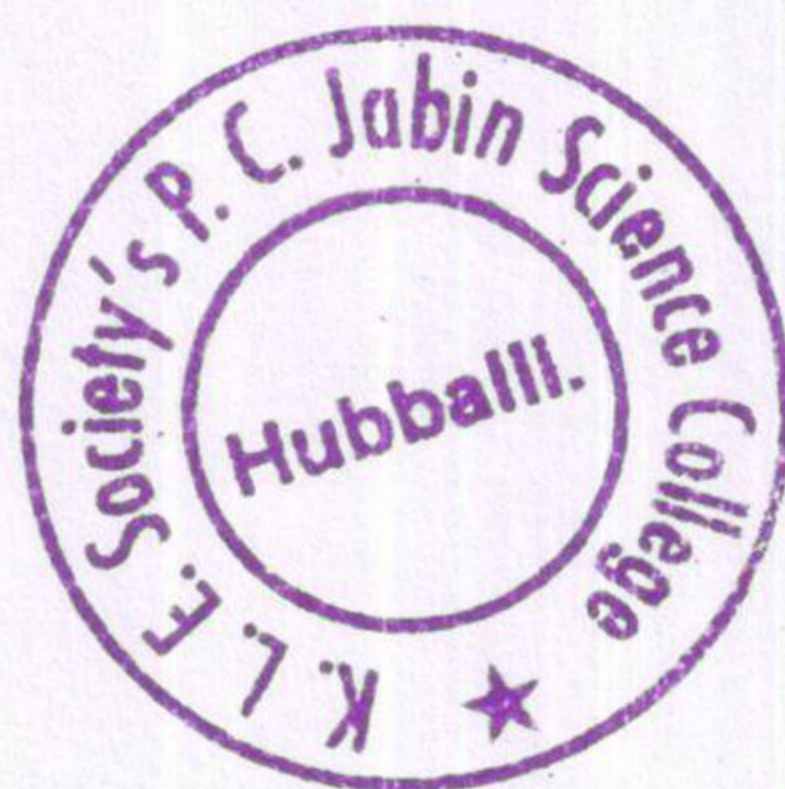
▲ 1/3 ▼

Semester

1,020 responses



- I
- II
- III
- IV
- V
- VI





LE SOCIETY'S

P. C. JABIN SCIENCE COLLEGE,

AUTONOMOUS COLLEGE, CPE PHASE -III

AFFILIATED TO KARNATAK UNIVERSITY DHARWAD
APPROVED BY UNIVERSITY GRANTS COMMISSION, NEW DELHI AND
GOVERNMENT OF KARNATAKA

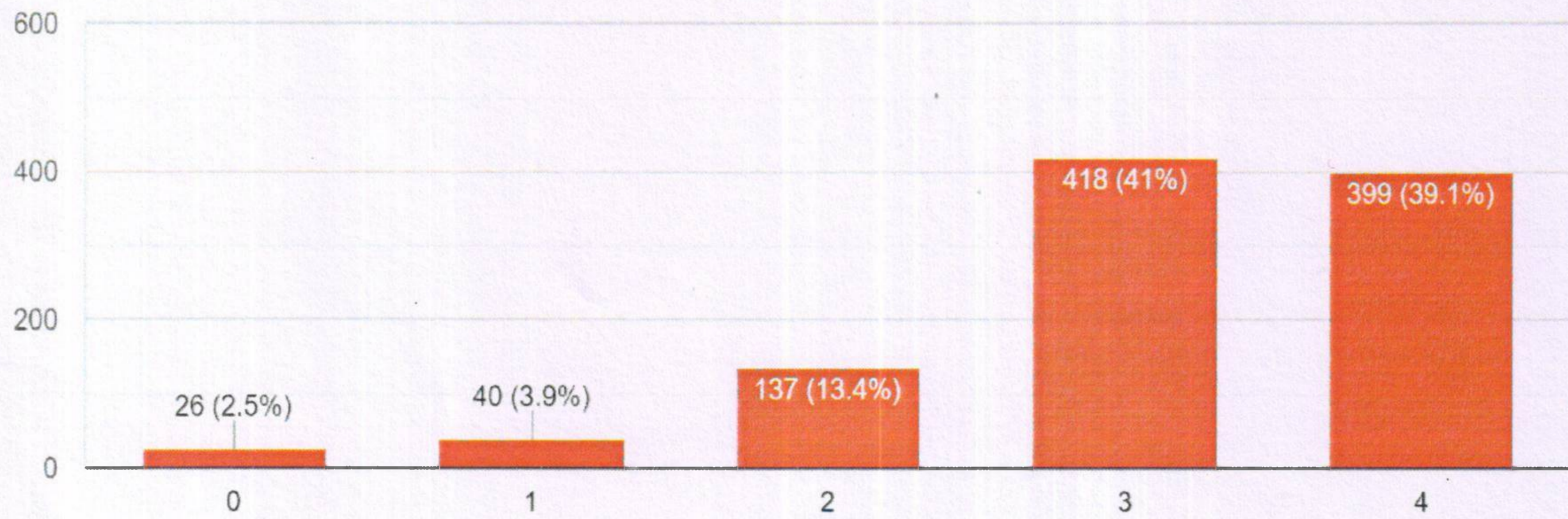
Accredited at 'A' Grade by NAAC

VIDYANAGAR, HUBBALLI-580031

INTERNAL QUALITY ASSURANCE CELL

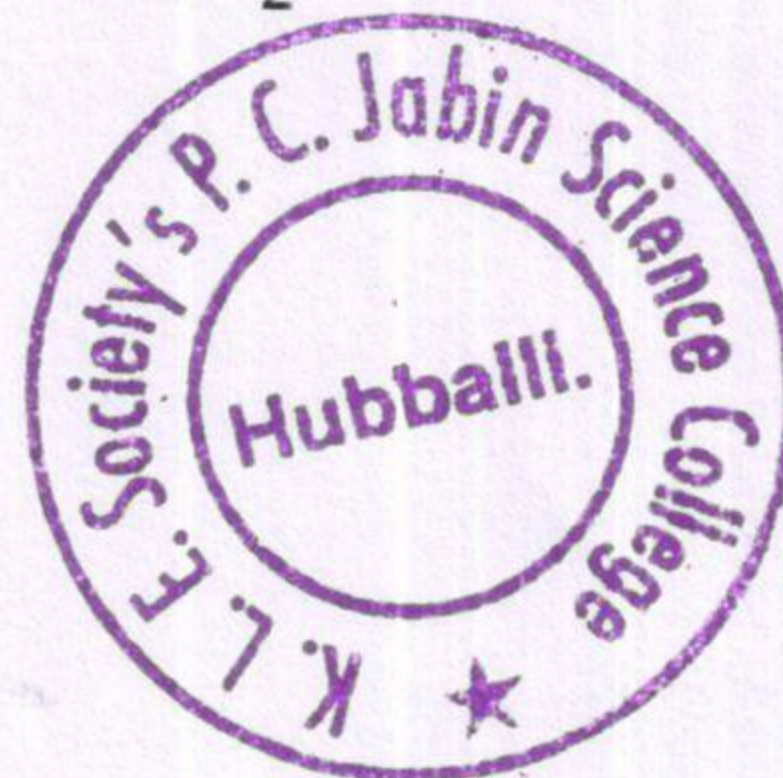
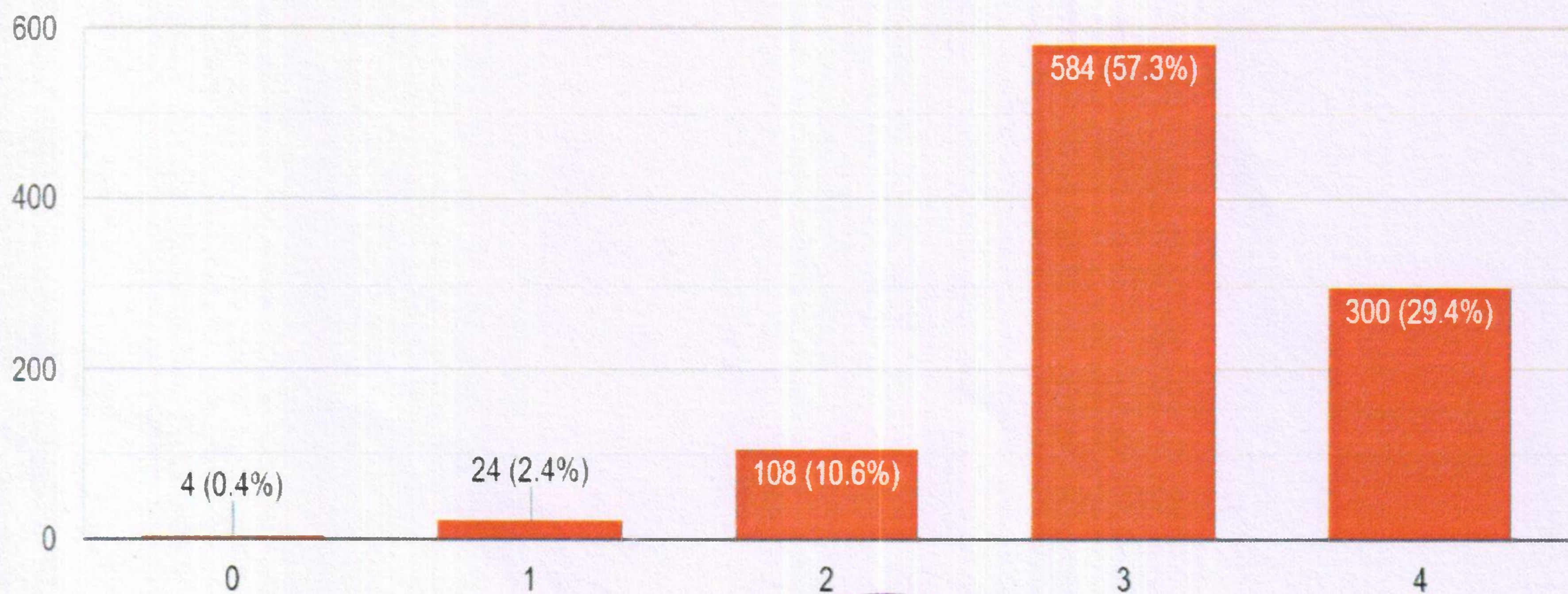
How much of the syllabus was covered in the class? (0) 0 to 29%, (1) 30 to 54%, (2) 55 to 69%, (3) 70 to 84%, (4) 85 to 100%

1,020 responses



How well did the teacher's prepare for the classes? (0) Won't teach at all, (1) Indifferently, (2) Poorly, (3) Satisfactorily, (4) Thoroughly

1,020 responses



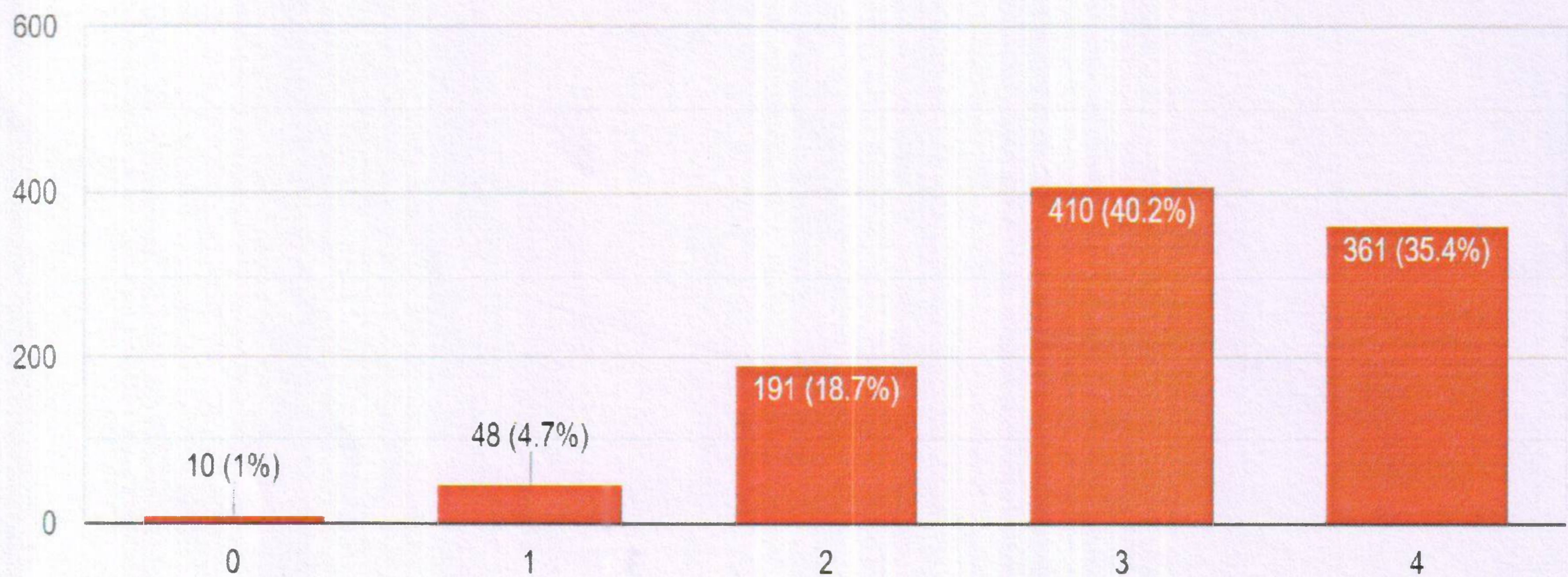


LE SOCIETY'S
P. C. JABIN SCIENCE COLLEGE,
AUTONOMOUS COLLEGE, CPE PHASE -III
AFFILIATED TO KARNATAK UNIVERSITY DHARWAD
APPROVED BY UNIVERSITY GRANTS COMMISSION, NEW DELHI AND
GOVERNMENT OF KARNATAKA
Accredited at 'A' Grade by NAAC
VIDYANAGAR, HUBBALLI-580031

INTERNAL QUALITY ASSURANCE CELL

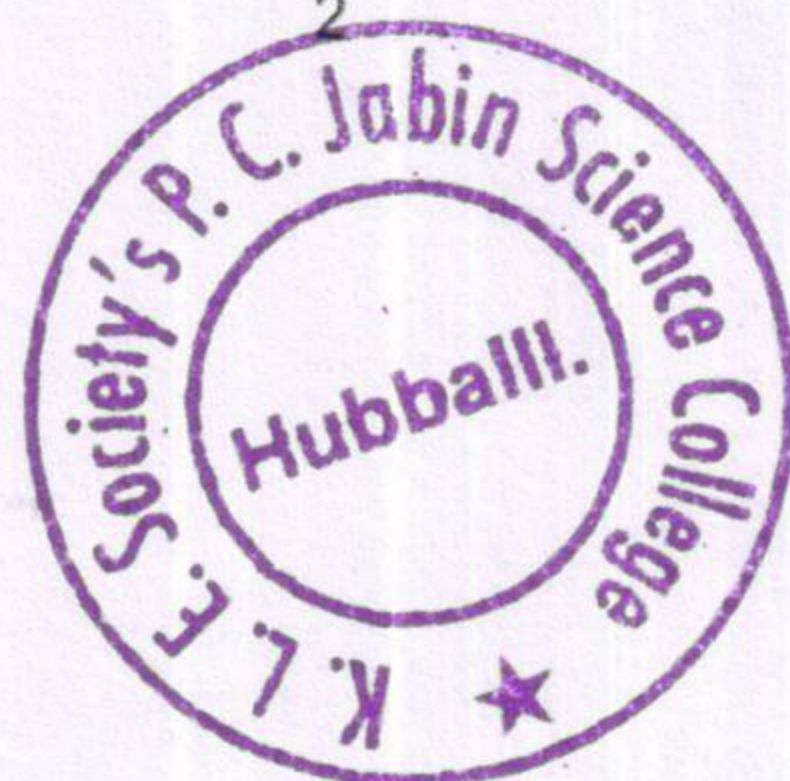
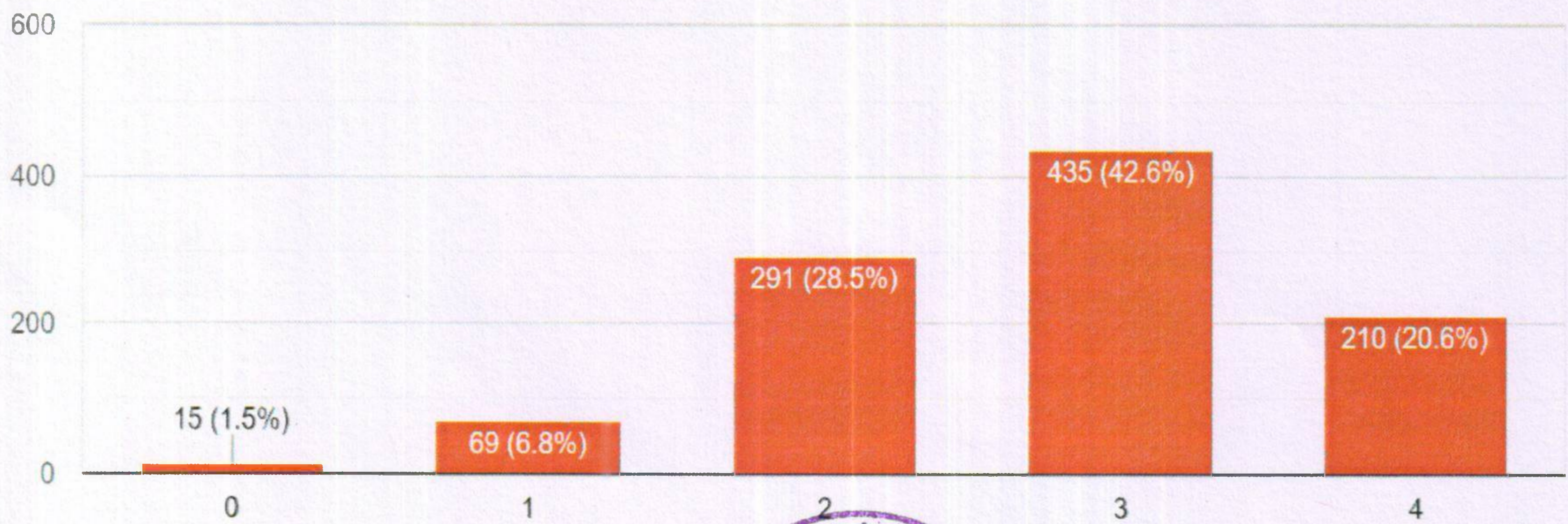
How well were the teachers able to communicate (0) Very poor communication, (1) Generally ineffective, (2) Just satisfactorily, (3) Sometimes effective, (4) Always effective

1,020 responses



The teacher's approach to teaching can best be described as (0) Poor, (1) Fair, (2) Good, (3) Very Good, (4) Excellent

1,020 responses

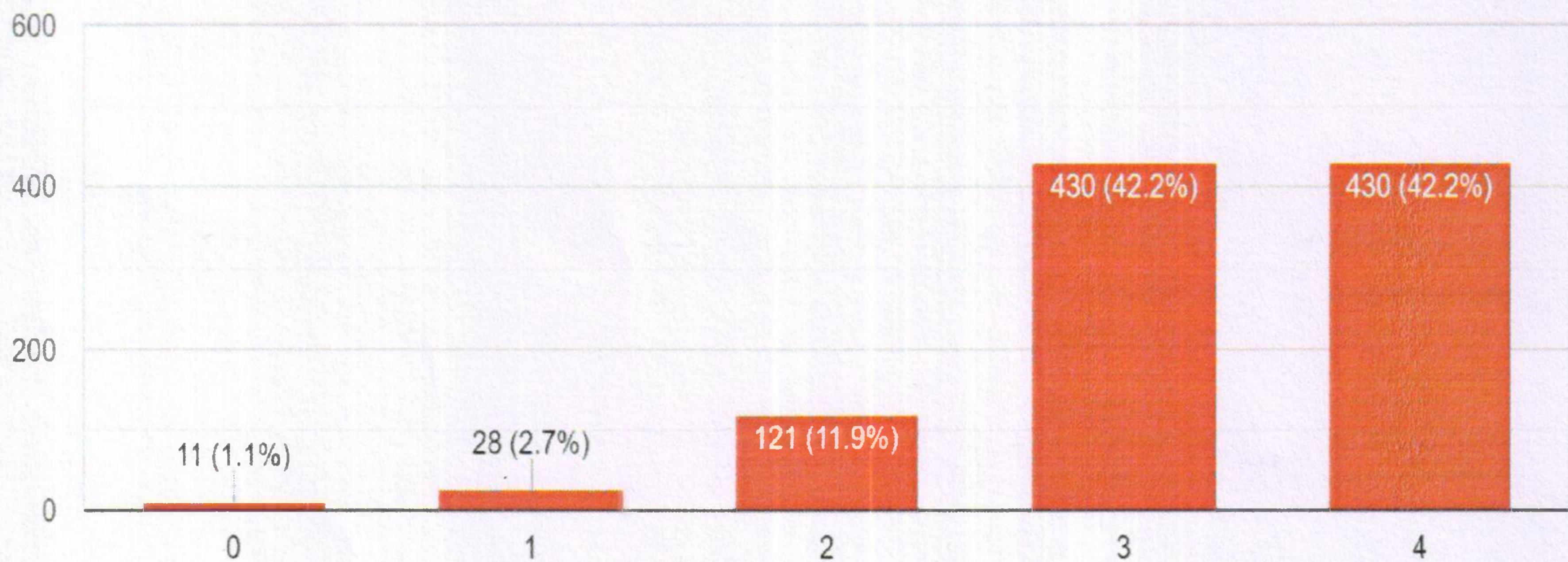




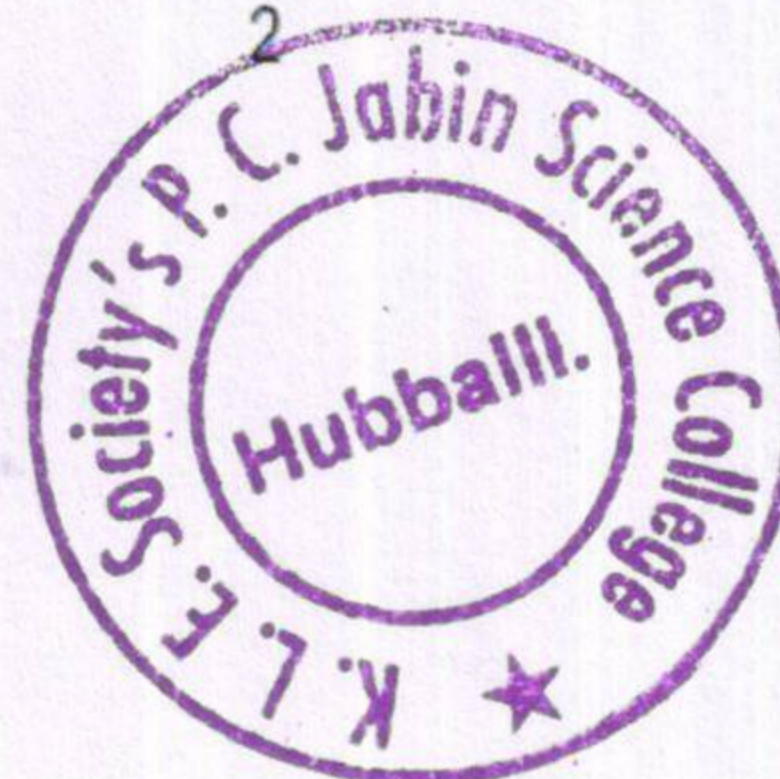
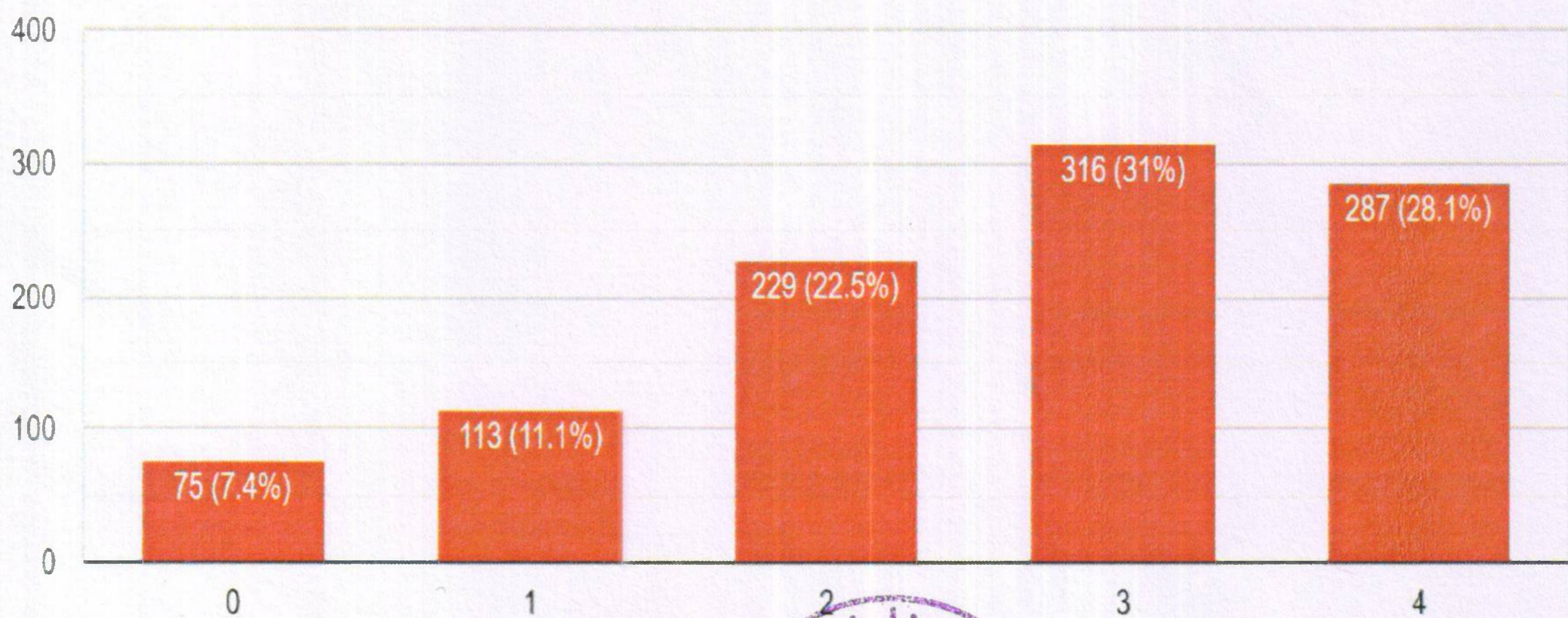
LE SOCIETY'S
P. C. JABIN SCIENCE COLLEGE,
AUTONOMOUS COLLEGE, CPE PHASE -III
AFFILIATED TO KARNATAK UNIVERSITY DHARWAD
APPROVED BY UNIVERSITY GRANTS COMMISSION, NEW DELHI AND
GOVERNMENT OF KARNATAKA
Accredited at 'A' Grade by NAAC
VIDYANAGAR, HUBBALLI-580031

INTERNAL QUALITY ASSURANCE CELL

Fairness of the internal evaluation process by the teachers (0) Unfair, (1) Usually unfair, (2) Sometimes unfair, (3) Usually fair, (4) Always fair
1,020 responses



The institute takes active interest in promoting internship, student exchange, field visit opportunities for students. (0) Never, (1) Rarely, (2) Occasionally / Sometimes, (3) Often, (4) Regularly
1,020 responses

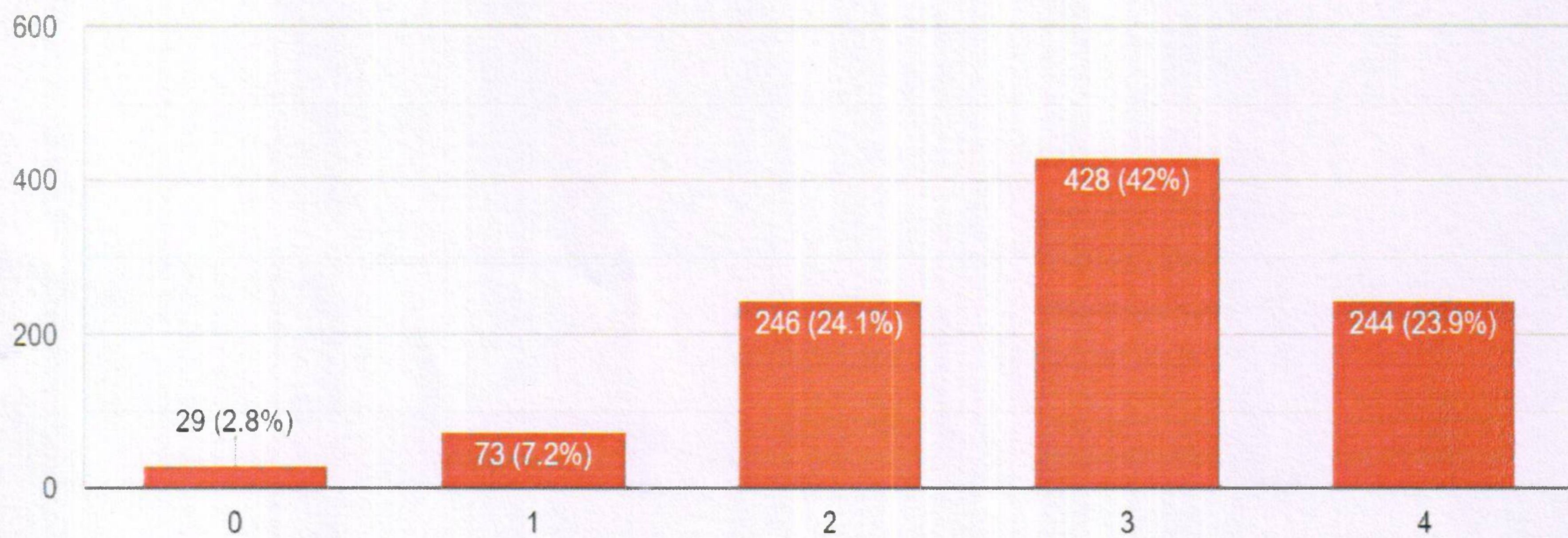




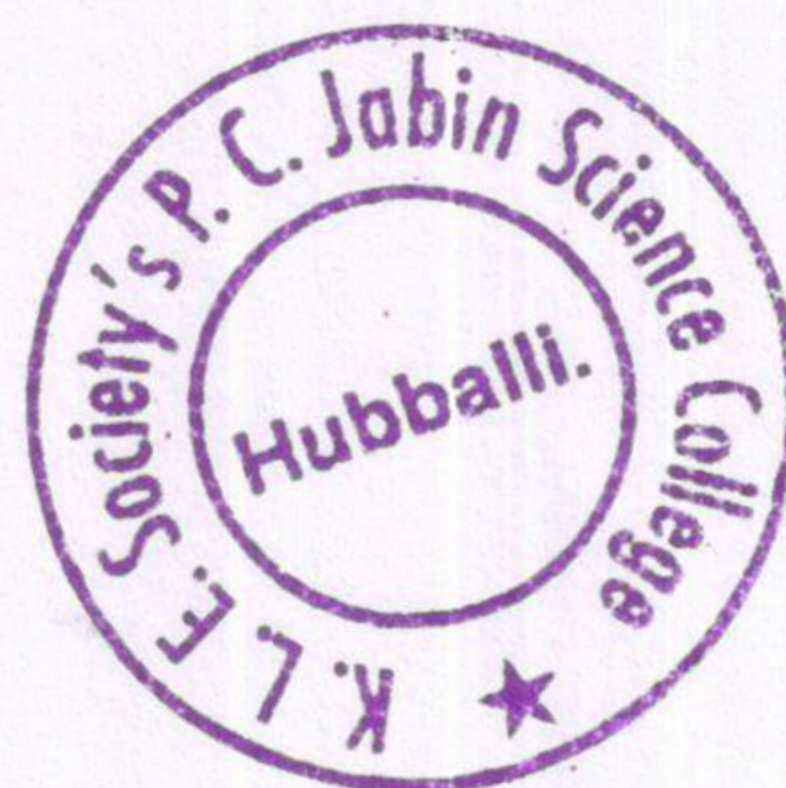
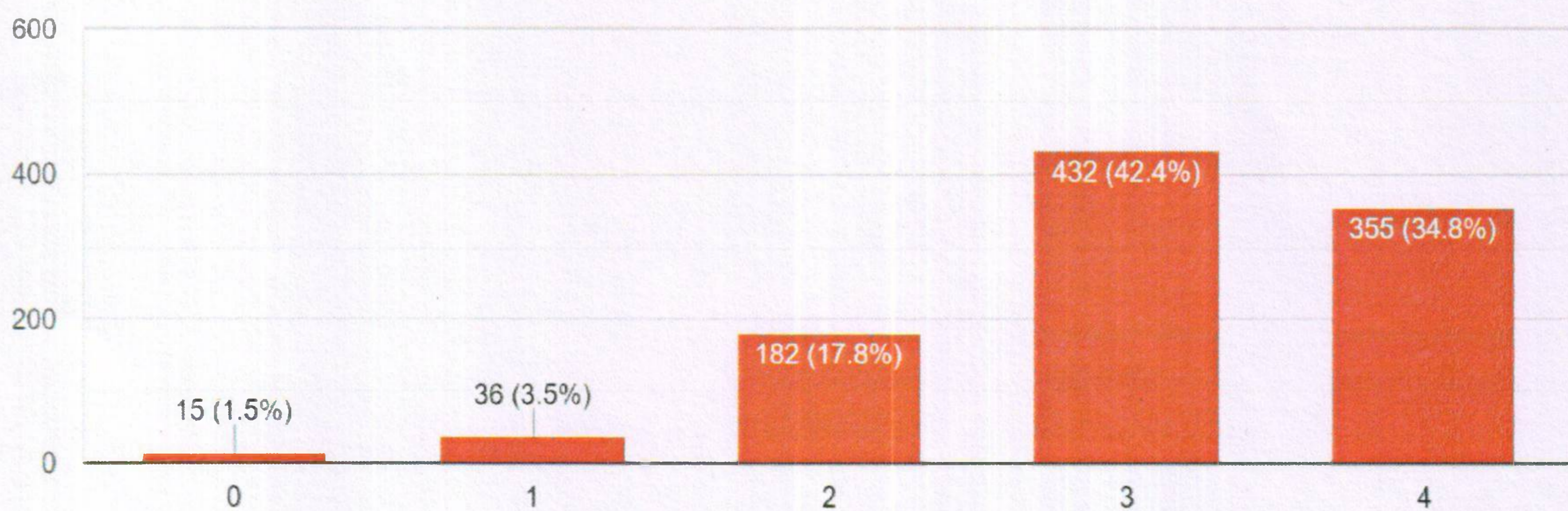
LE SOCIETY'S
P. C. JABIN SCIENCE COLLEGE,
AUTONOMOUS COLLEGE, CPE PHASE -III
AFFILIATED TO KARNATAK UNIVERSITY DHARWAD
APPROVED BY UNIVERSITY GRANTS COMMISSION, NEW DELHI AND
GOVERNMENT OF KARNATAKA
Accredited at 'A' Grade by NAAC
VIDYANAGAR, HUBBALLI-580031

INTERNAL QUALITY ASSURANCE CELL

The teaching and mentoring process in your institution facilitates you in cognitive, social and emotional growth. (0) Not at all, (1) Marginally, (2) Moderately, (3) Very well, (4) Significantly
1,020 responses



The institution provides multiple opportunities to learn and grow (0) Strongly disagree, (1) Disagree, (2) Neutral, (3) Agree, (4) Strongly agree
1,020 responses

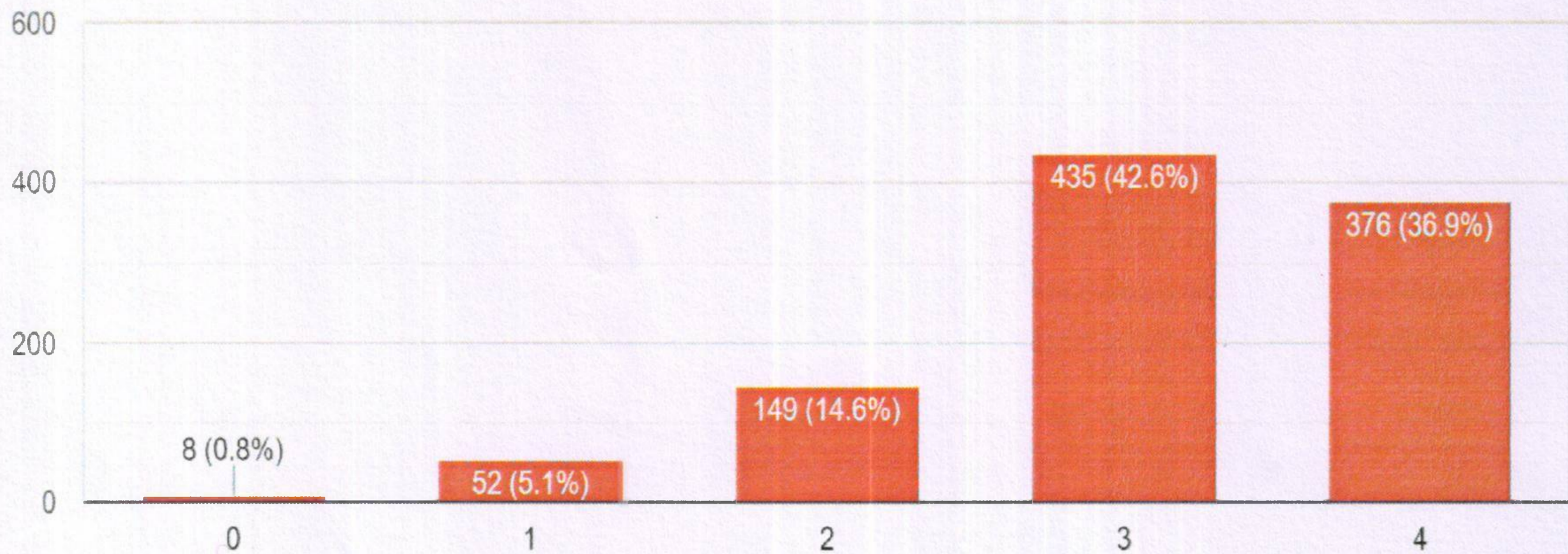




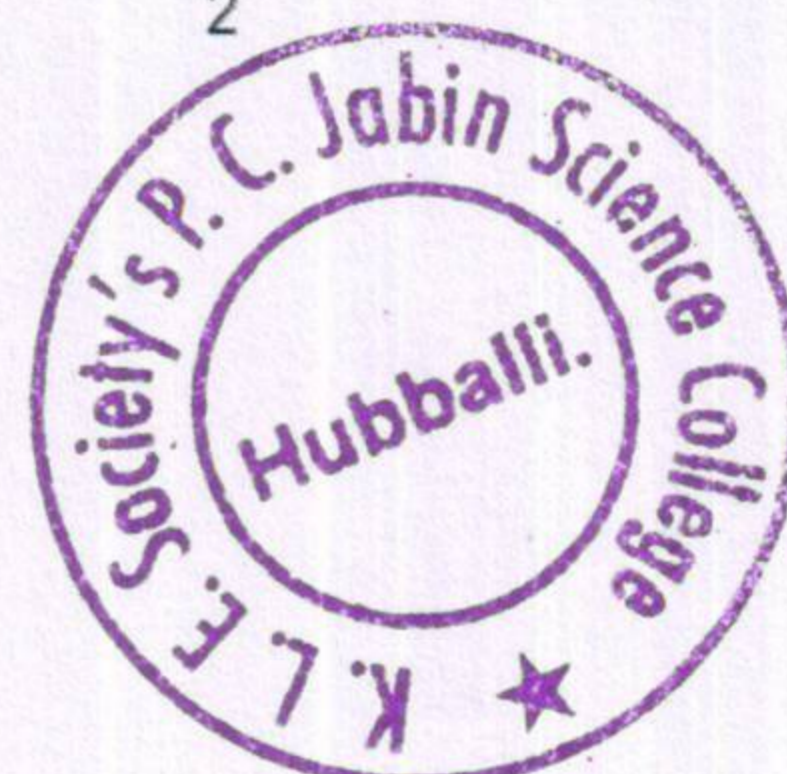
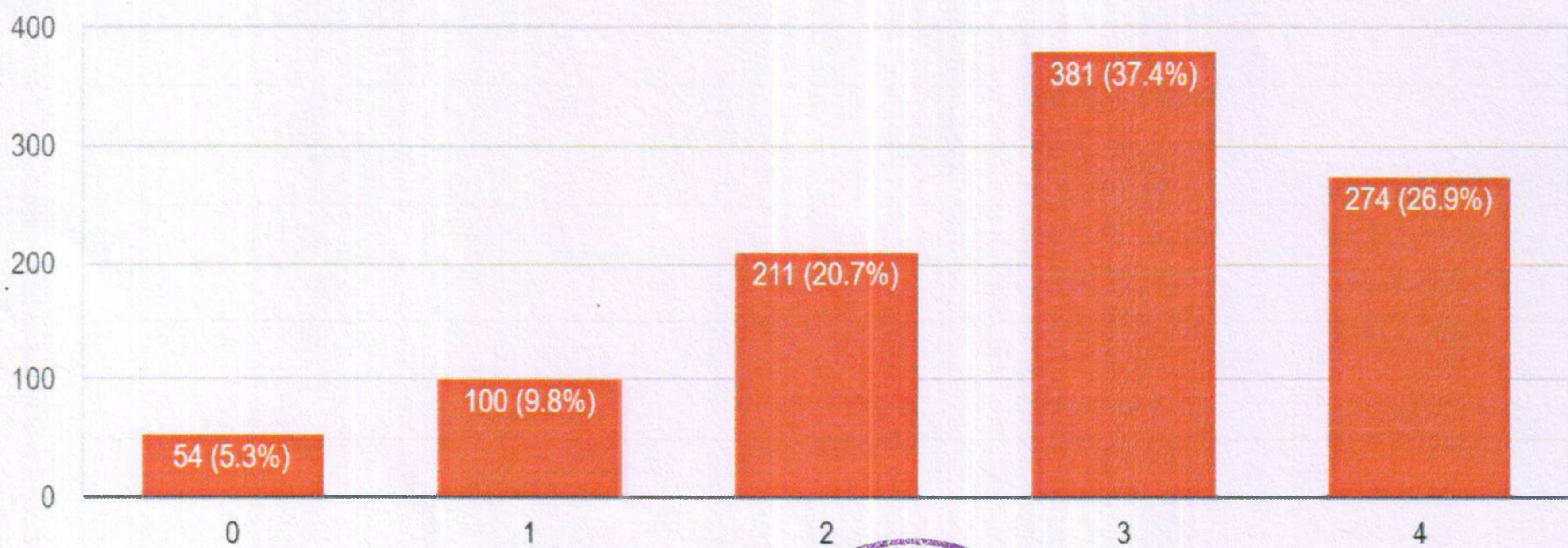
LE SOCIETY'S
P. C. JABIN SCIENCE COLLEGE,
AUTONOMOUS COLLEGE, CPE PHASE -III
AFFILIATED TO KARNATAK UNIVERSITY DHARWAD
APPROVED BY UNIVERSITY GRANTS COMMISSION, NEW DELHI AND
GOVERNMENT OF KARNATAKA
Accredited at 'A' Grade by NAAC
VIDYANAGAR, HUBBALLI-580031

INTERNAL QUALITY ASSURANCE CELL

The teachers illustrate the concepts through examples and applications (0) Never, (1) Rarely, (2) Occasionally / Sometimes, (3) Usually, (4) Every time
1,020 responses



The teachers identify your strengths and encourage you with providing right level of challenges.
(0) Unable to, (1) Slightly, (2) Partially, (3) Reasonably, (4) Fully
1,020 responses



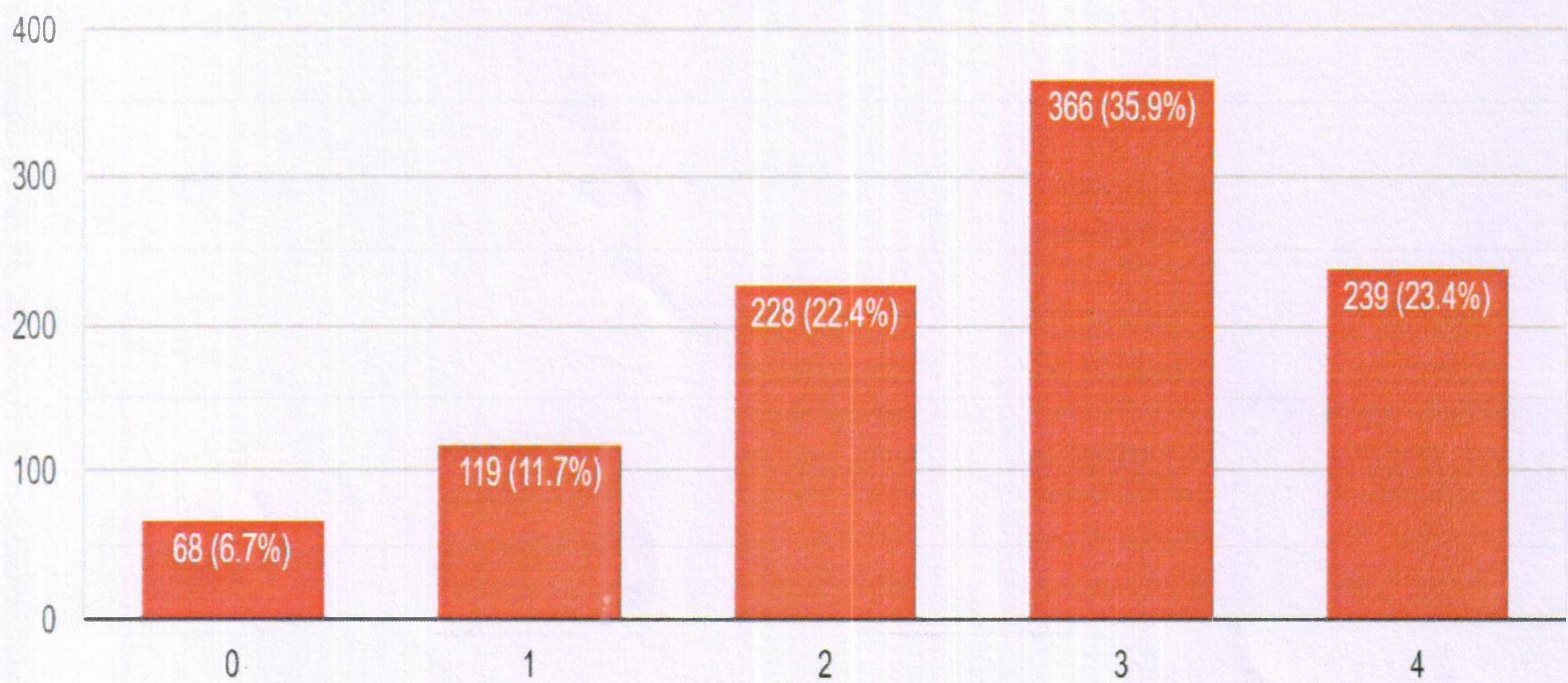


LE SOCIETY'S
P. C. JABIN SCIENCE COLLEGE,
AUTONOMOUS COLLEGE, CPE PHASE -III
AFFILIATED TO KARNATAK UNIVERSITY DHARWAD
APPROVED BY UNIVERSITY GRANTS COMMISSION, NEW DELHI AND
GOVERNMENT OF KARNATAKA
Accredited at 'A' Grade by NAAC
VIDYANAGAR, HUBBALLI-580031

INTERNAL QUALITY ASSURANCE CELL

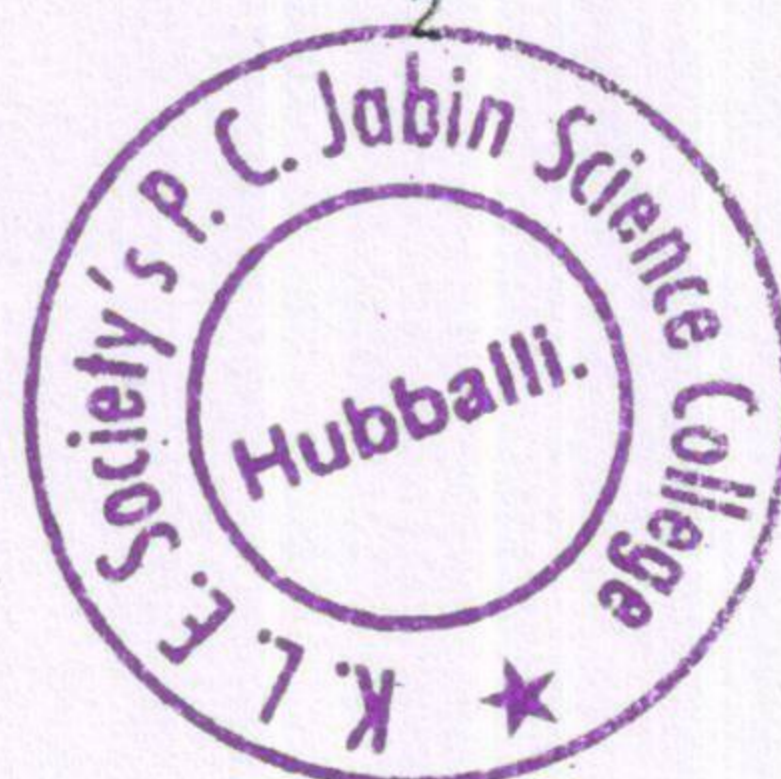
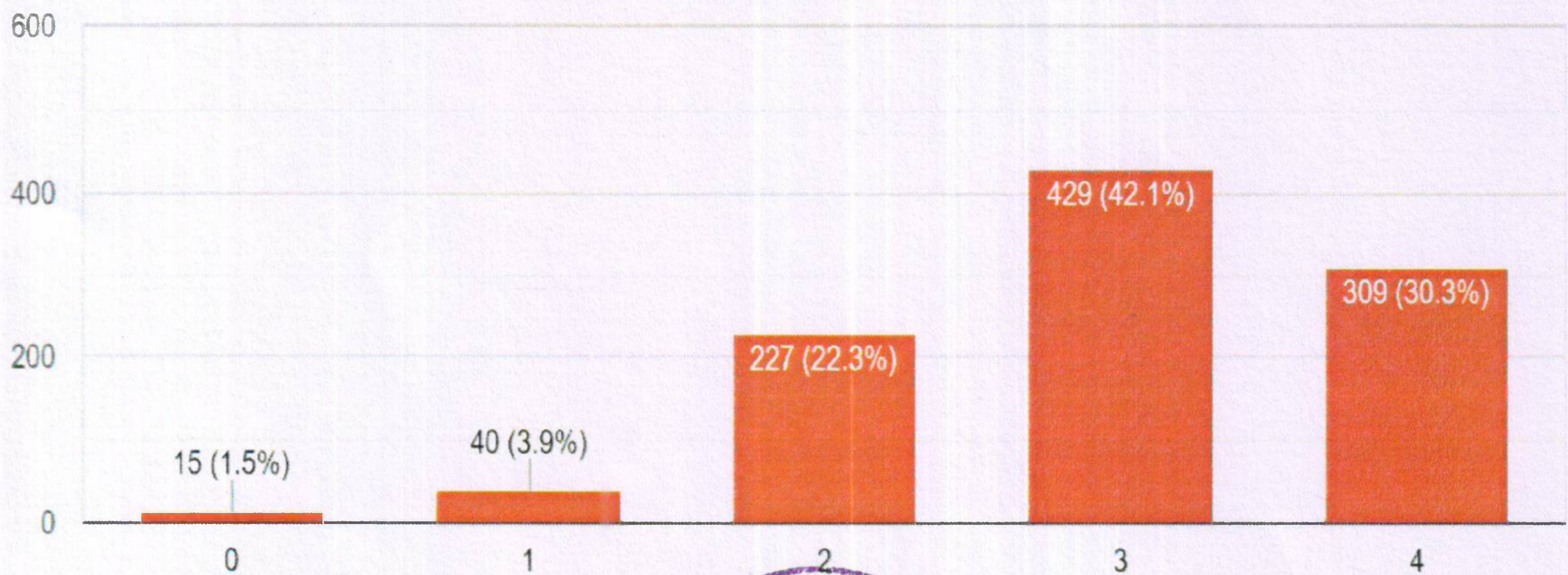
Teachers are able to identify your weaknesses and help you to overcome them. (0) Never, (1) Rarely, (2) Occasionally / Sometimes, (3) Usually, (4) Every time

1,020 responses



The institution makes effort to engage students in the monitoring, review and continuous quality improvement of the teaching learning process. (0) S...isagree, (2) Neutral, (3) Agree, (4) Strongly agree

1,020 responses





LE SOCIETY'S

P. C. JABIN SCIENCE COLLEGE,

AUTONOMOUS COLLEGE, CPE PHASE -III

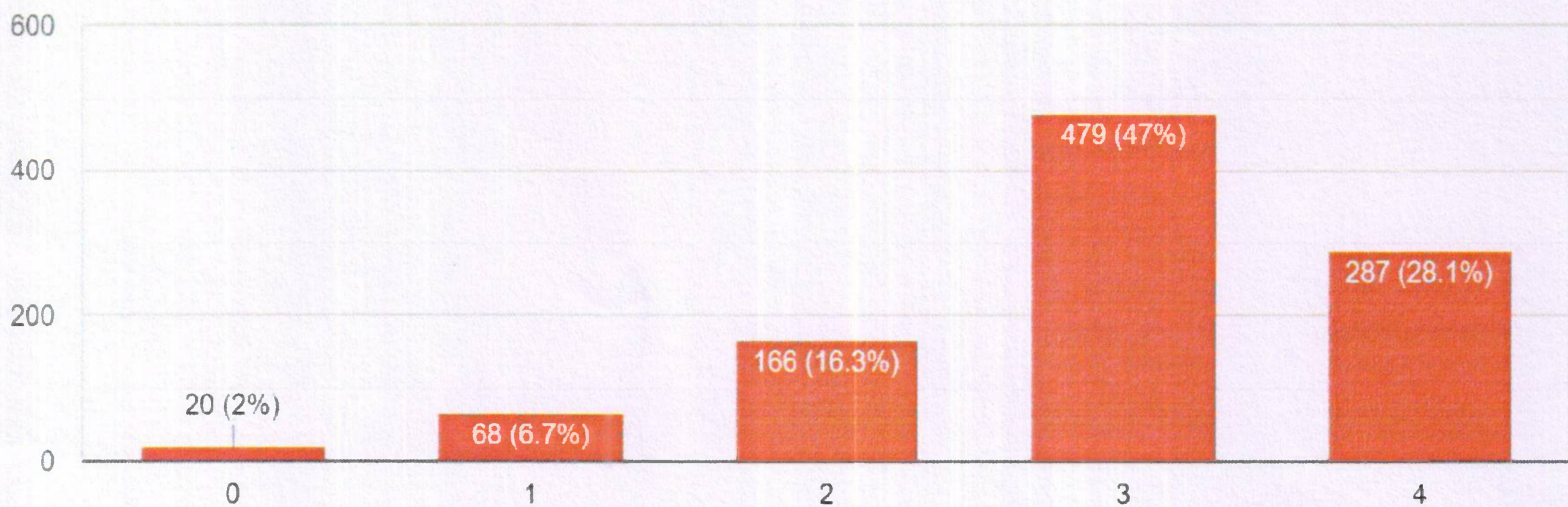
AFFILIATED TO KARNATAK UNIVERSITY DHARWAD
APPROVED BY UNIVERSITY GRANTS COMMISSION, NEW DELHI AND
GOVERNMENT OF KARNATAKA

Accredited at 'A' Grade by NAAC

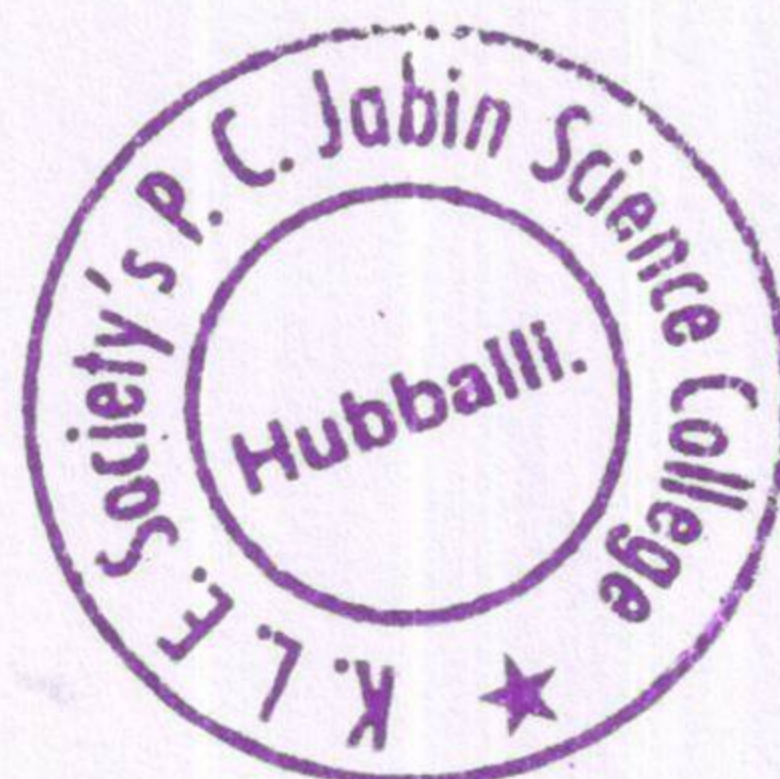
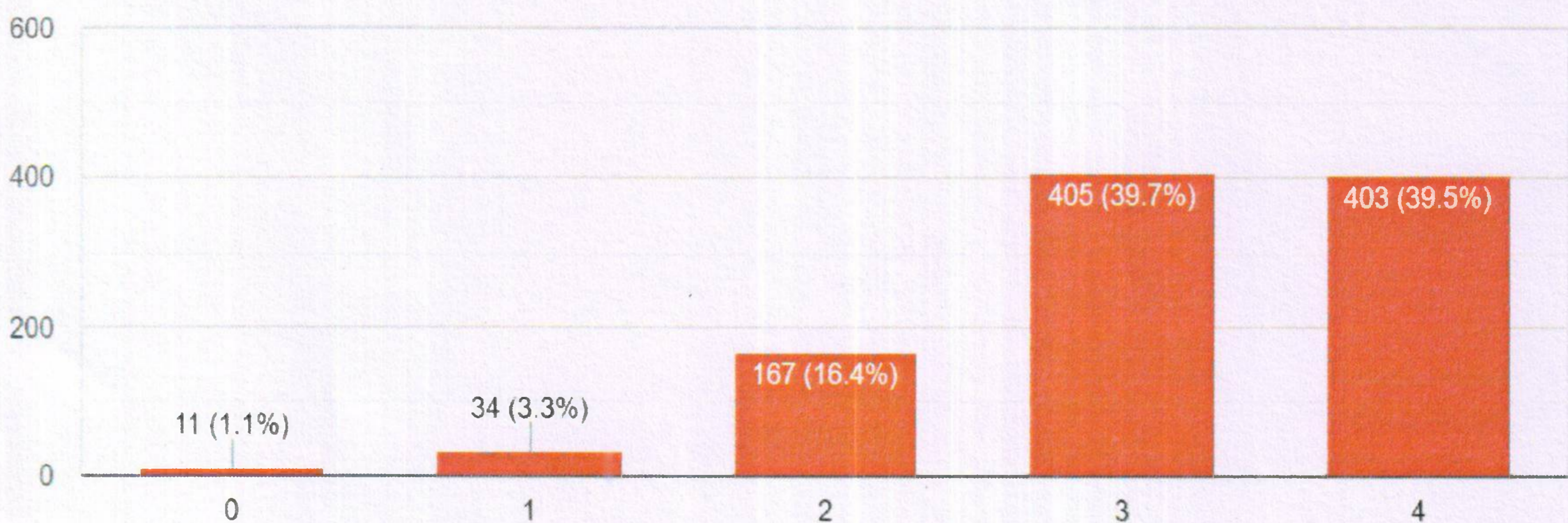
VIDYANAGAR, HUBBALLI-580031

INTERNAL QUALITY ASSURANCE CELL

The institute/ teachers use student centric methods, such as experiential learning, participative learning and problem solving methodologies for en...2) Some what, (3) Moderate, (4) To a great extent
1,020 responses



Teachers encourage you to participate in extracurricular activities. (0) Strongly disagree, (1) Disagree, (2) Neutral, (3) Agree, (4) Strongly agree
1,020 responses





LE SOCIETY'S

P. C. JABIN SCIENCE COLLEGE,

AUTONOMOUS COLLEGE, CPE PHASE -III

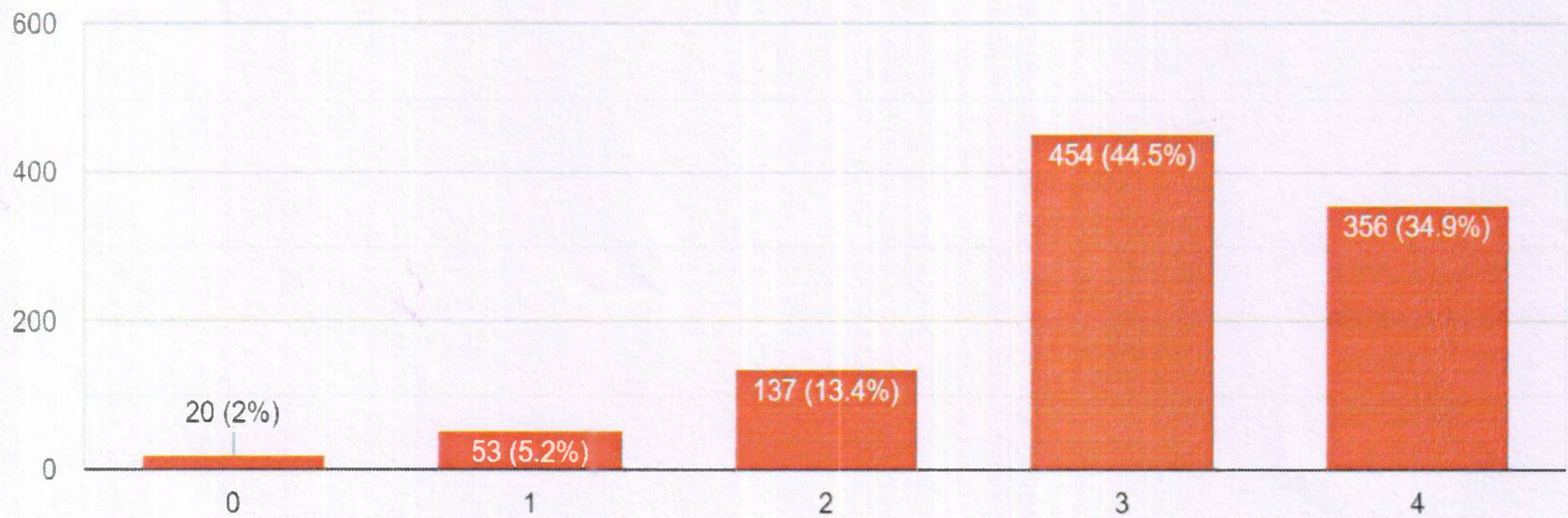
AFFILIATED TO KARNATAK UNIVERSITY DHARWAD
APPROVED BY UNIVERSITY GRANTS COMMISSION, NEW DELHI AND
GOVERNMENT OF KARNATAKA

Accredited at 'A' Grade by NAAC

VIDYANAGAR, HUBBALLI-580031

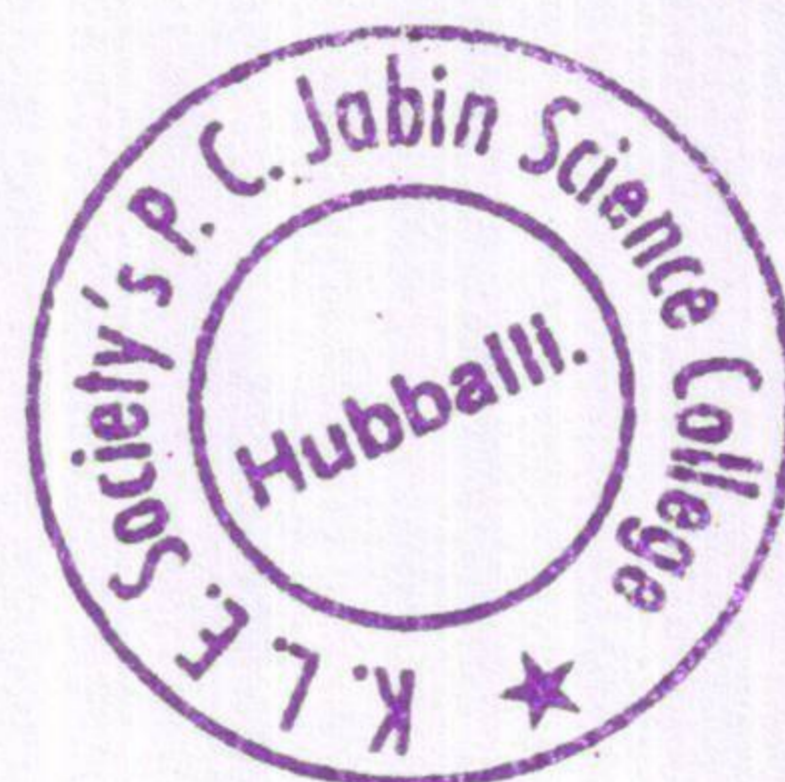
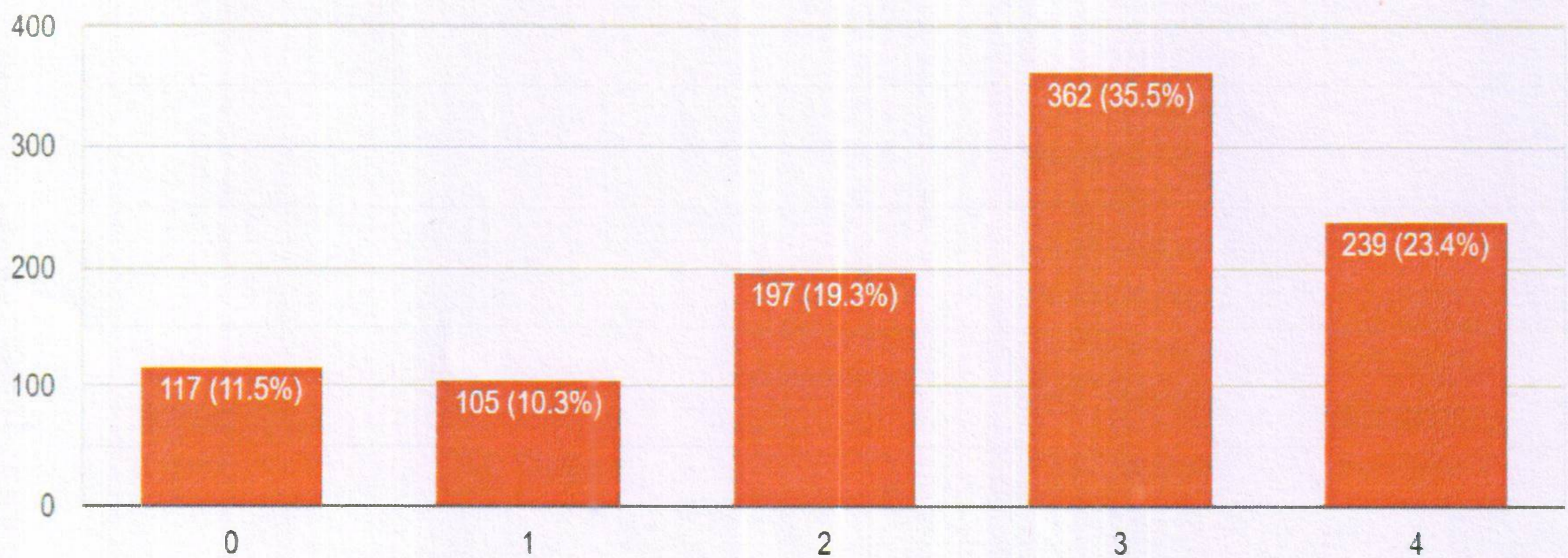
INTERNAL QUALITY ASSURANCE CELL

Efforts are made by the institute/ teachers to inculcate soft skills, life skills and employability skills to make you ready for the world of work. (0) Not at... (2) Some what, (3) Moderate, (4) To a great extent
1,020 responses



What percentage of teachers use ICT tools such as LCD projector, Multimedia, etc. while teaching. (0) Below 29%, (1) 30-49%, (2) 50-69%, (3) 70-89%, (4) Above 90%

1,020 responses





LE SOCIETY'S

P. C. JABIN SCIENCE COLLEGE,

AUTONOMOUS COLLEGE, CPE PHASE -III

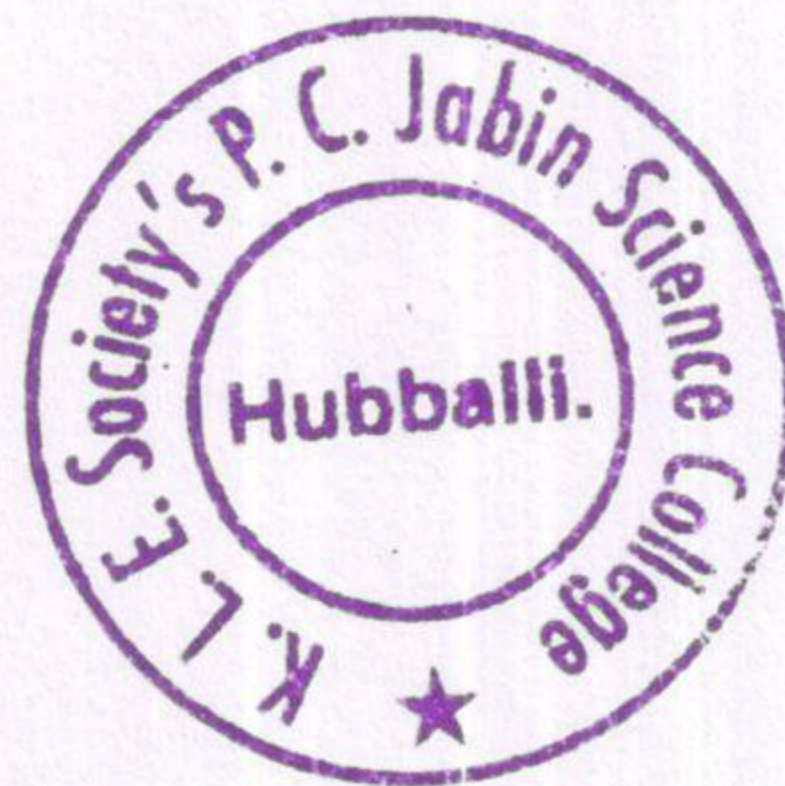
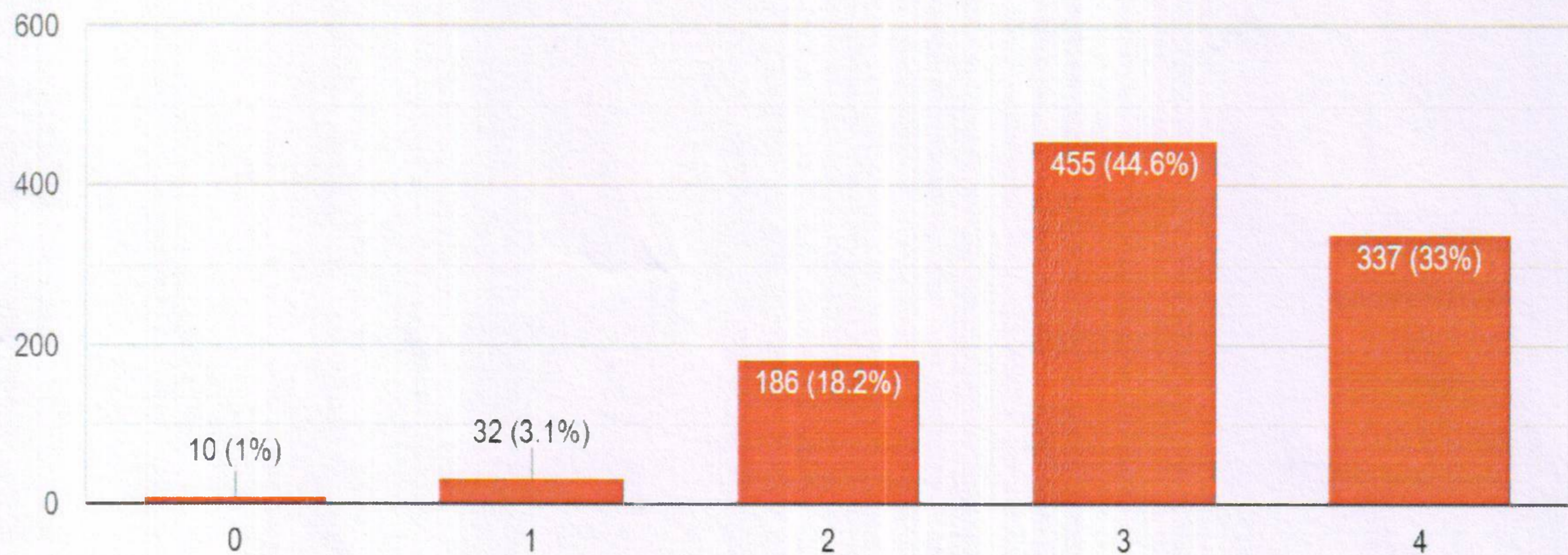
AFFILIATED TO KARNATAK UNIVERSITY DHARWAD
APPROVED BY UNIVERSITY GRANTS COMMISSION, NEW DELHI AND
GOVERNMENT OF KARNATAKA

Accredited at 'A' Grade by NAAC
VIDYANAGAR, HUBBALLI-580031

INTERNAL QUALITY ASSURANCE CELL

The overall quality of teaching-learning process in your institute is very good. (0) Strongly disagree, (1) Disagree, (2) Neutral, (3) Agree, (4) Strongly agree

1,020 responses





LE SOCIETY'S

P. C. JABIN SCIENCE COLLEGE,

AUTONOMOUS COLLEGE, CPE PHASE -III

AFFILIATED TO KARNATAK UNIVERSITY DHARWAD
APPROVED BY UNIVERSITY GRANTS COMMISSION, NEW DELHI AND
GOVERNMENT OF KARNATAKA

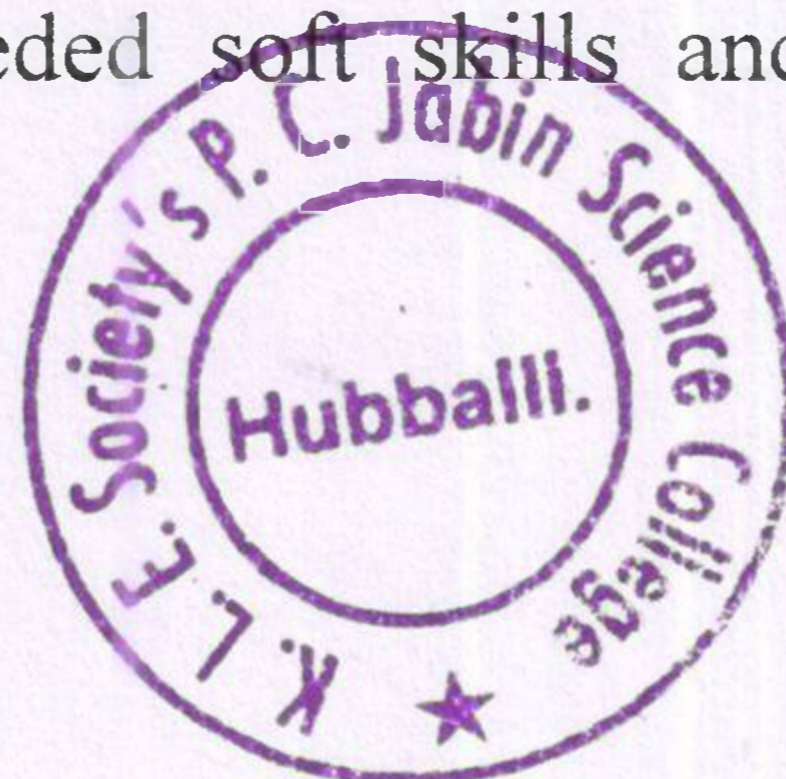
Accredited at 'A' Grade by NAAC
VIDYANAGAR, HUBBALLI-580031

INTERNAL QUALITY ASSURANCE CELL

ANALYSIS REPORT

2020-21

- I. Annually the college conducts Students Satisfactory Survey on overall institutional performance. The survey comprises of students' satisfaction on curriculum and teaching learning process. The curriculum and teaching learning process is designed by the autonomous college so as to greatly benefit the students to acquire knowledge and life skill.
- II. A survey on a structured questionnaire was taken online from the students of B.Sc and BCA. The questionnaires framed by the NAAC were used in the online survey. Total of 1020 students have participated & sent their response. In the analysis of the survey, there was a satisfactory outcome. Based on the analysis, students are highly satisfied with the design of the need-based curriculum, relevant skill based and employability factor.
- III. The process of teaching and learning is student centric; the students were highly appreciated the regular and timely engagements and delivery of lectures.
- IV. Questioner twenty-one reflects the view of most students that the faculty are well communicative in the classroom and even outside the class. They also imprecise the need of more use of innovative teaching methodologies.
- V. The transparent evaluation process is the core value of the college, students are very comfortable and satisfied in the fairness of the evaluation process.
- VI. The field and industrial visits are the part of the curriculum, students express their happiness over the events organization and attended such events with greater enthusiasm.
- VII. On the bases of the survey response, the faculty identifies the need of action to fulfill the student requirements regarding the learning ability and teach them to clarify the concepts. Extra care also taken by the faculty on regularly basis.
- VIII. The student survey depicts a well-defined mentoring system in solving overall problems of student and does a fallow up actions for all the tasks and grievances. It was strongly expressed by the students that they have given an importance in the academic reviews and participation in quality momentum, encouragements to organize and participate in quality melas. The faculty kept the students engaged in various pedagogies. Most classrooms are fitted with modern teaching aids, such as LCD, audio aids, etc, this made most faculty to follow ICT based teaching.
- IX. To a greater extent, the students opined that the college is extending to support the students to impart most needed soft skills and communication skills at the global competency level.





LE SOCIETY'S

P. C. JABIN SCIENCE COLLEGE,

AUTONOMOUS COLLEGE, CPE PHASE -III

AFFILIATED TO KARNATAK UNIVERSITY DHARWAD
APPROVED BY UNIVERSITY GRANTS COMMISSION, NEW DELHI AND
GOVERNMENT OF KARNATAKA

Accredited at 'A' Grade by NAAC
VIDYANAGAR, HUBBALLI-580031

INTERNAL QUALITY ASSURANCE CELL

X. Most students expressed that the teaching and learning in the institute is excellent. Some of the feeling and suggestions of the students are listed here:

- All teachers should use ICT tools like projectors and animated videos for teaching.
- Need to increase Field visits.
- Soft Skills to be implemented for the beneficiary of the students learning especially in the domain of their subjects.
- The incentives for education.

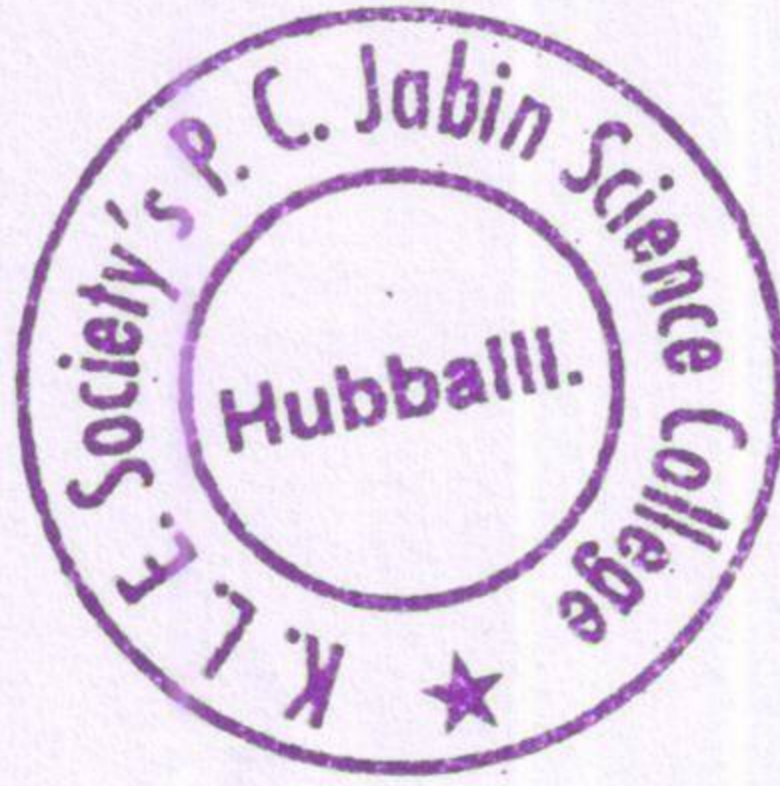
IQAC Coordinator

IQAC Coordinator

K. L. E. Society's P. C. Jabin Science College

Vidyanagar, Hubballi.

Karnataka - 580031.



Principal

Principal

K. L. E. Society's P. C. Jabin Science College

Vidyanagar, Hubballi.

Karnataka - 580031.