

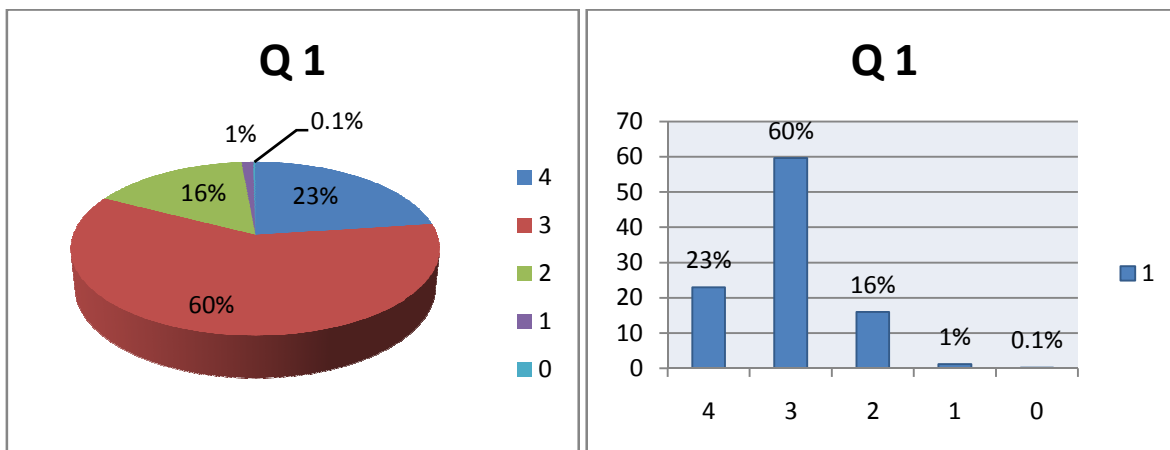


**KLE Society's**  
**P. C. Jabin Science College, Hubballi**  
**Autonomous College CPE - PHASE-III**  
**Re-accredited by NAAC at 'A' level with 3.43 CGPA**

**Student Satisfaction Survey 2018-19**

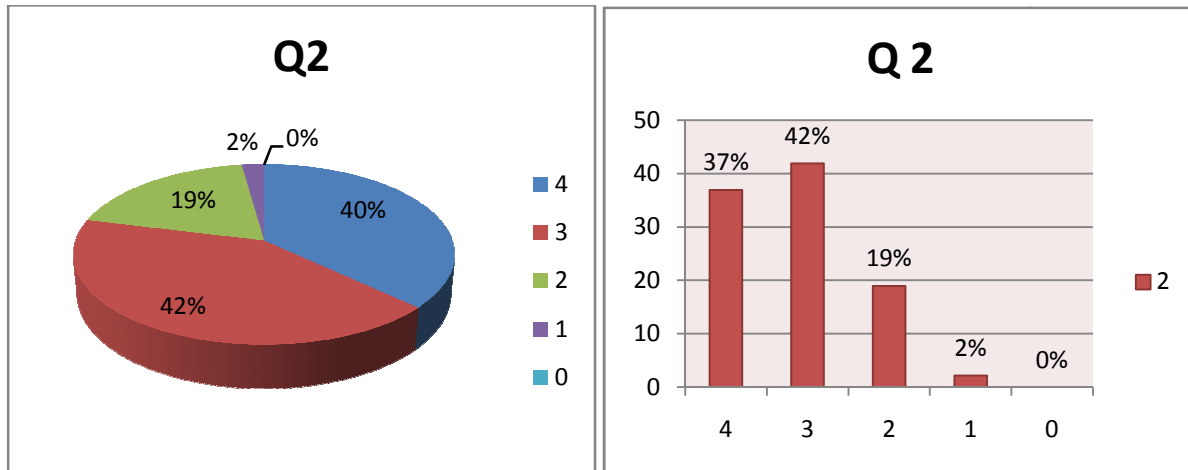
1. Efforts are made by the institute/ teachers to inculcate soft skills, life skills and employability skills to make you ready for the world of work.

		4	3	2	1	0
		85 to 100%	70 to 84%	55 to 69%	30 to 54%	Below 30%
1	Students	116	302	81	6	1
	%	22.9249	59.68379	16.00791	1.185771	0.197628



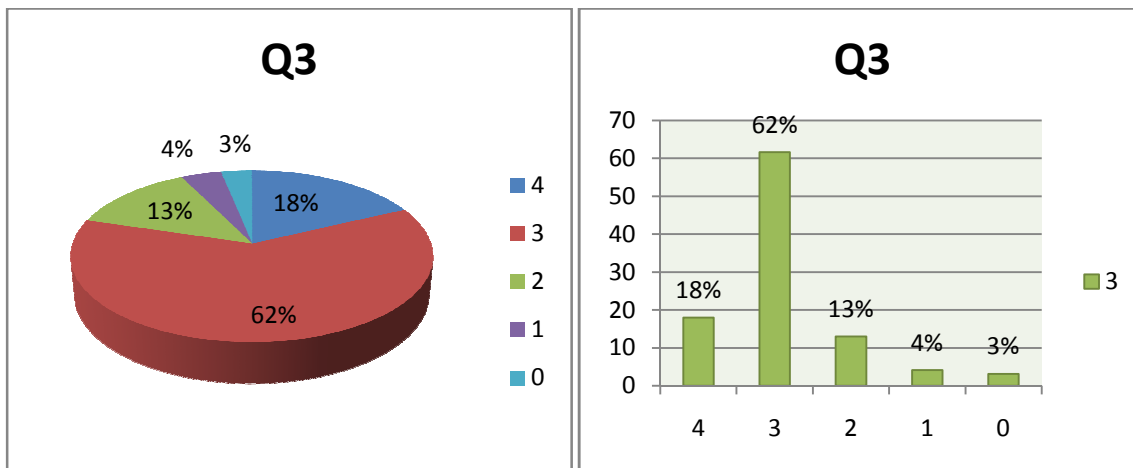
2. How much of the syllabus was covered in the class?

		4	3	2	1	0
		Thoroughly	Satisfactorily	Poorly	Indifferently	Won't teach at all
2	Students	187	212	96	11	0
	%	36.95652	41.89723	18.97233	2.173913	0



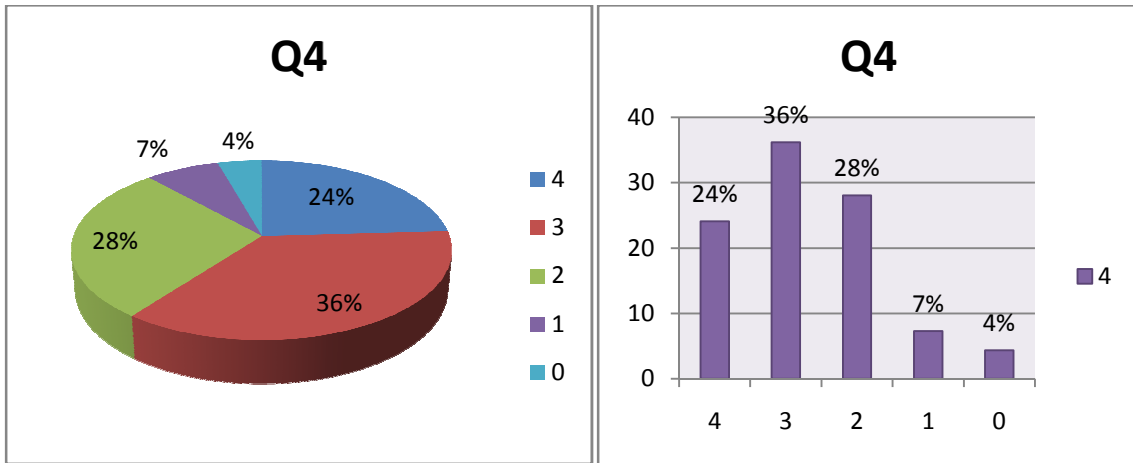
3. Teachers inform you about your expected competencies course outcomes and programme outcomes.

		4	3	2	1	0
		Always effective	Sometimes effective	Just satisfactorily	Generally ineffective	Very poor communication
3	Students	91	312	66	21	16
	%	17.98419	61.66008	13.04348	4.150198	3.162055



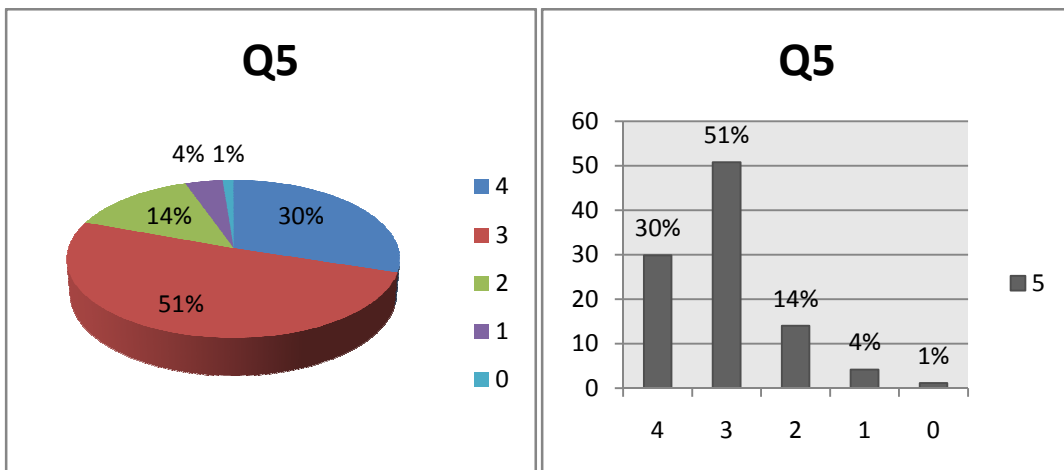
4. The institution makes effort to engage students in the monitoring, review and continuous quality improvement of the teaching learning process.

		4	3	2	1	0
		Excellent	Very Good	Good	Fair	Poor
4	Students	122	183	142	37	22
	%	24.11067	36.16601	28.06324	7.312253	4.347826



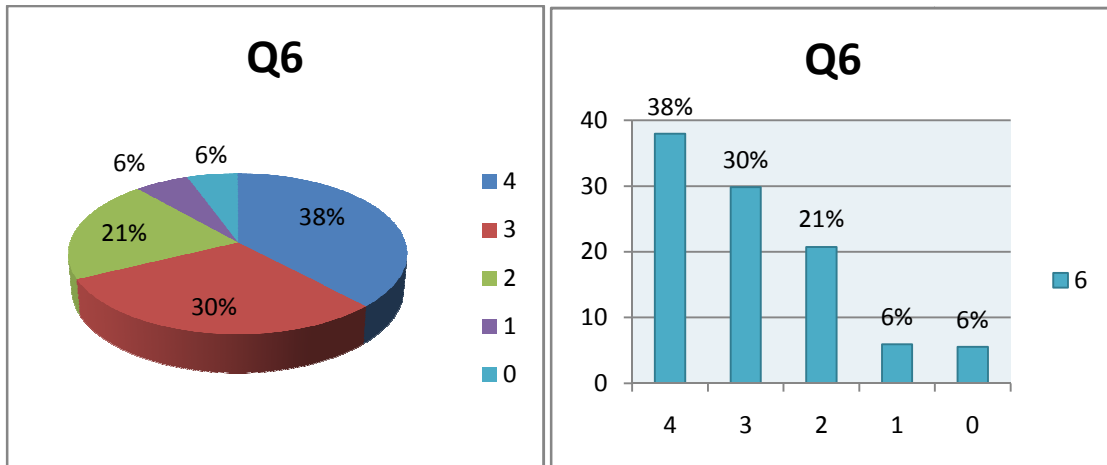
5. The teachers identify your strengths and encourage you with providing right level of challenges.

		4	3	2	1	0
		Always fair	Usually fair	Sometimes unfair	Usually unfair	Unfair
<b>5</b>	Students	151	257	71	21	6
	%	29.8419	50.79051	14.03162	4.150198	1.185771



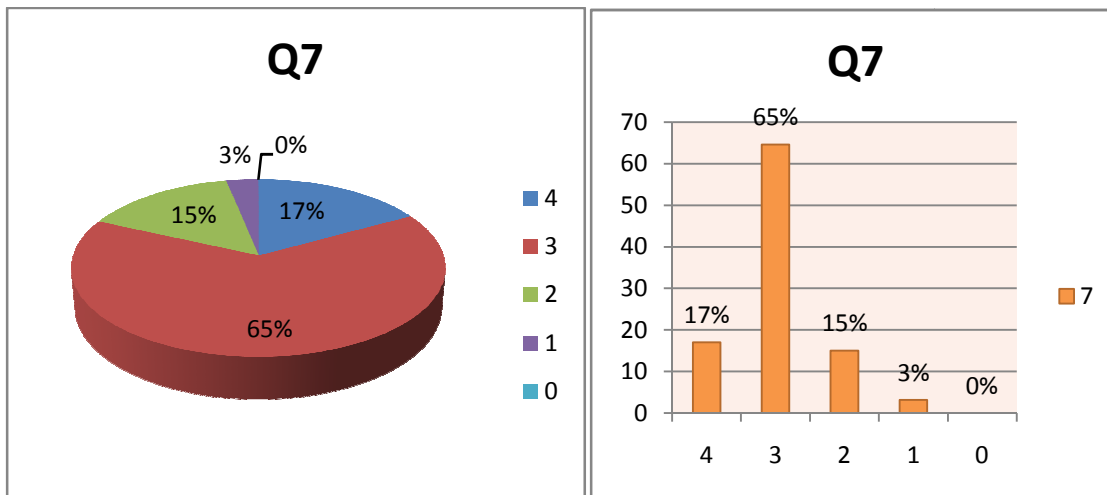
6. The teaching and mentoring process in your institution facilitates you in cognitive, social and emotional growth.

		4	3	2	1	0
		Every time	Usually	Occasionally / Sometimes	Rarely	Never
<b>6</b>	Students	192	151	105	30	28
	%	37.94466	29.8419	20.75099	5.928854	5.533597



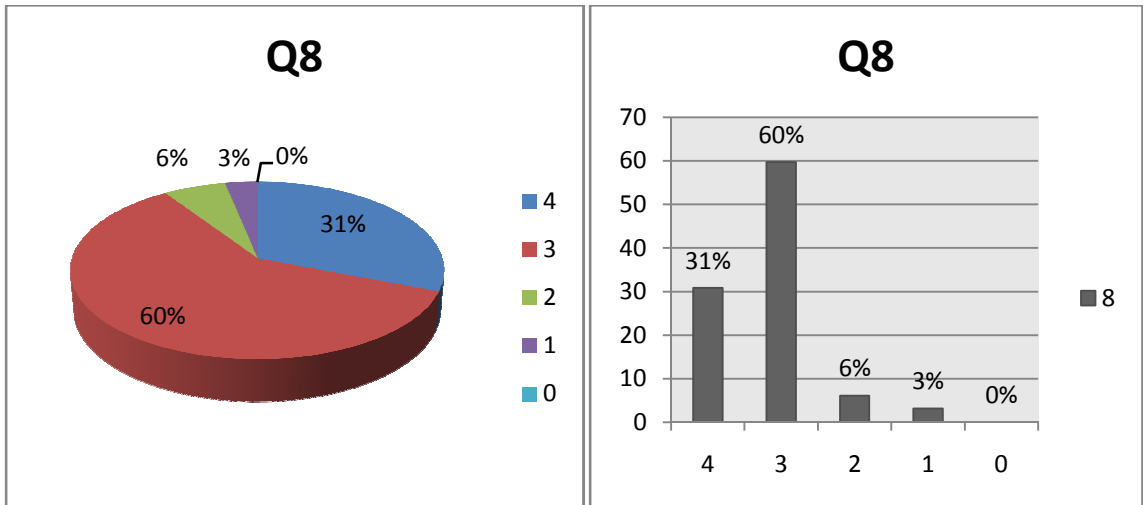
7. Fairness of the internal evaluation process by the teachers

		4	3	2	1	0
		Reguray	Often	Sometimes	Rarely	Never
7	Students	86	327	76	16	0
	%	16.99605	64.62451	15.01976	3.162055	0



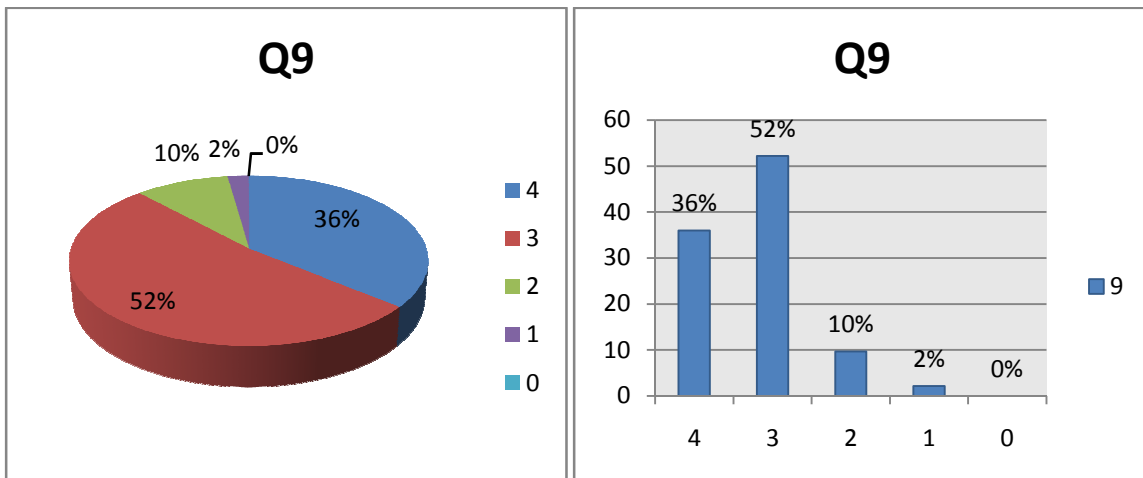
8. How well did the teachers prepare for the classes?

		4	3	2	1	0
		Significantly	Very well	Moderately	Marginally	Not at all
8	Students	156	302	30	15	0
	%	30.83004	59.68379	6.126482	3.162055	0



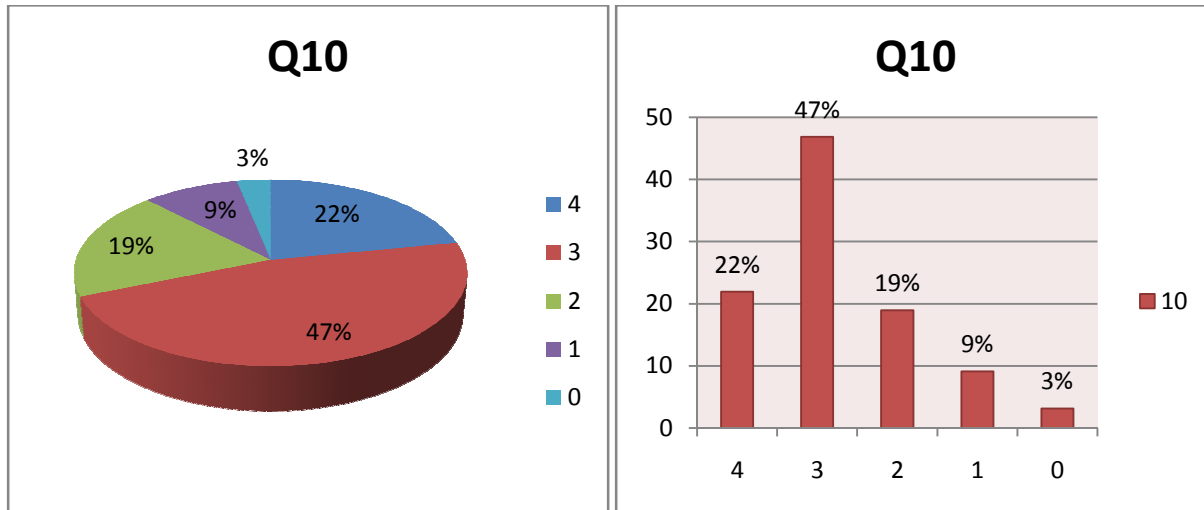
9. How well were the teachers able to communicate

		4	3	2	1	0
		Strongly agree	Agree	Neutral	Disagree	Strongly disagree
<b>9</b>	Students	182	264	49	11	0
	%	35.96838	52.17391	9.683794	2.173913	0



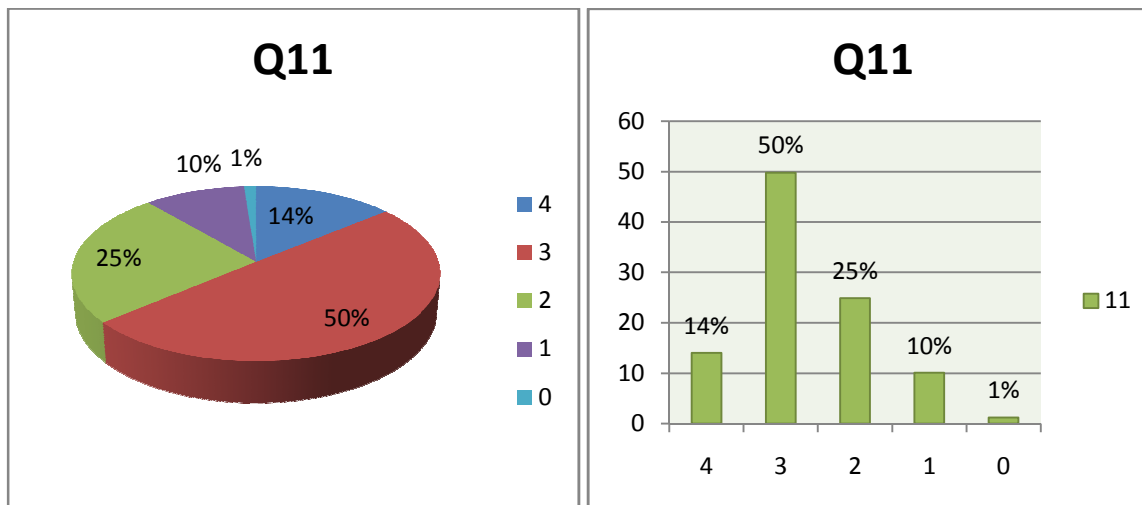
10. Teachers are able to identify your weaknesses and help you to overcome them.

		4	3	2	1	0
		Every time	Usually	occasional	Rarely	Never
<b>10</b>	Students	111	237	96	46	16
	%	21.93676	46.83794	18.97233	9.090909	3.162055



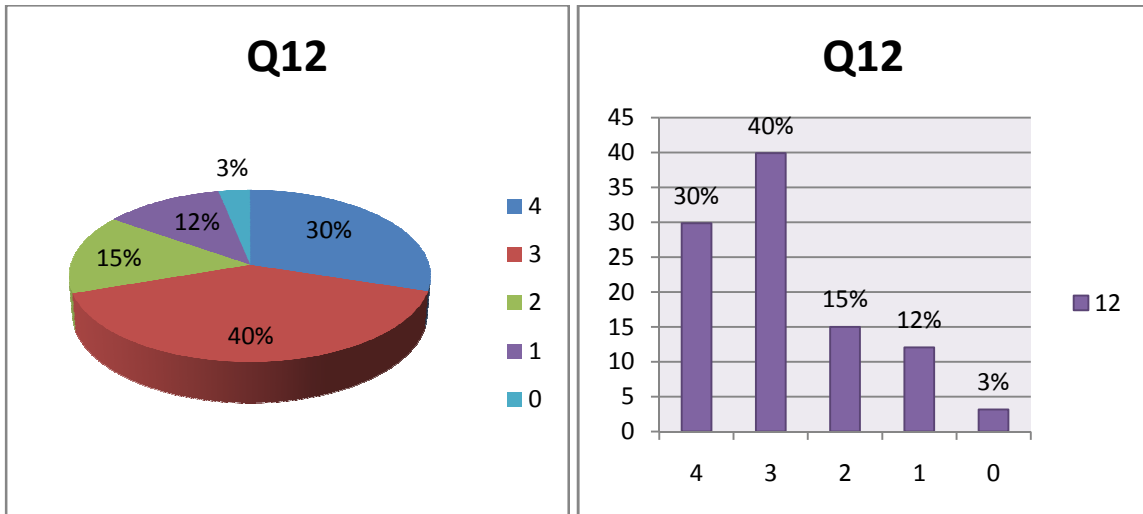
11. Teachers encourage you to participate in extracurricular activities.

		4	3	2	1	0
		Every time	Usually	Occasionally / Sometimes	Rarely	I don't have a mentor
<b>11</b>	Students	71	252	126	51	6
	%	14.03162	49.80237	24.90119	10.07905	1.185771



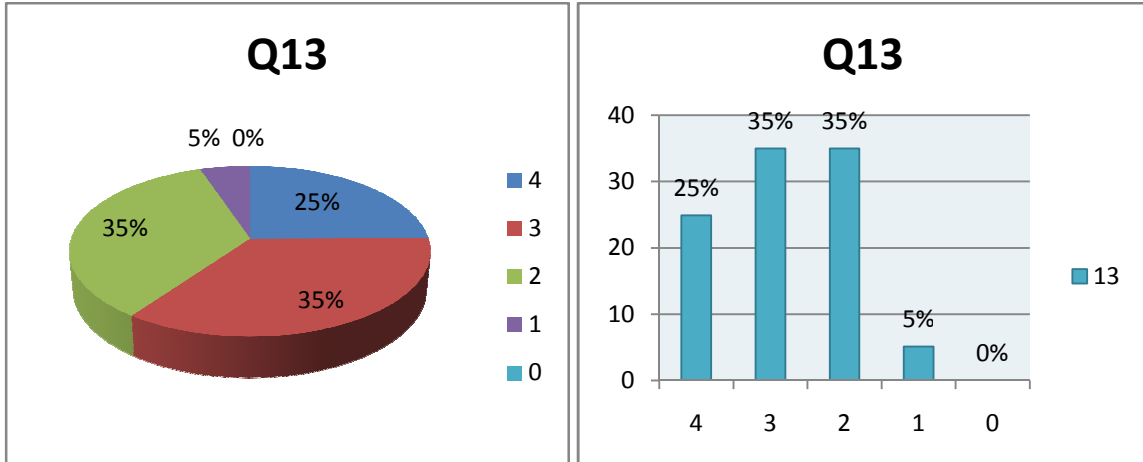
12. The institute takes active interest in promoting internship, student exchange, field visit opportunities for students.

		4	3	2	1	0
		Every time	Usually	Occasionally / Sometimes	Rarely	Never
<b>12</b>	Students	151	202	76	61	16
	%	29.8419	39.92095	15.01976	12.05534	3.162055



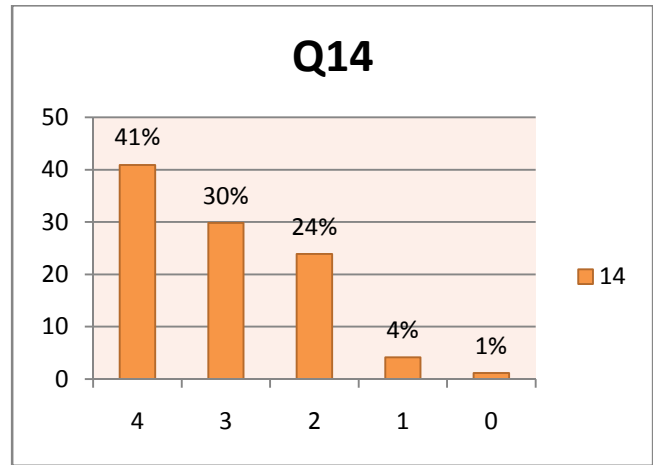
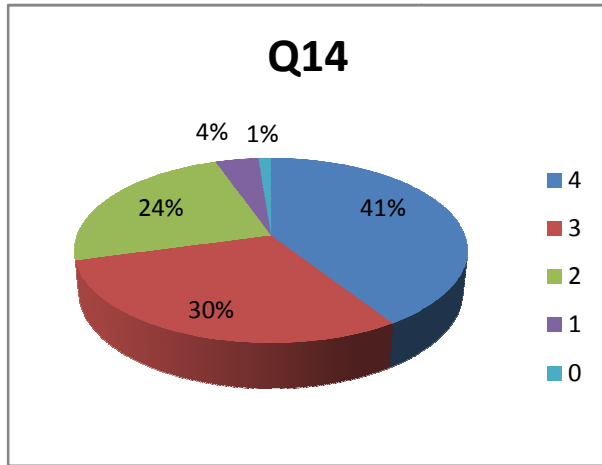
13. The institute/ teachers use student centric methods, such as experiential learning, participative learning and problem solving methodologies for enhancing learning experiences

		4	3	2	1	0
		Fully	Reasonably	Partially	Slightly	Unable to
<b>13</b>	Students	126	177	177	26	0
	%	24.90119	34.98024	34.98024	5.13834	0



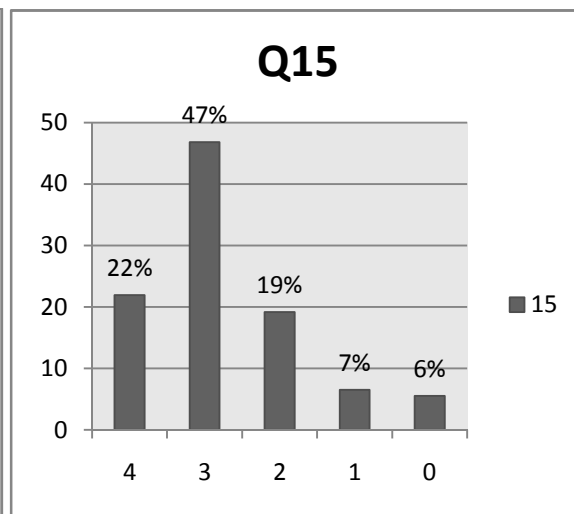
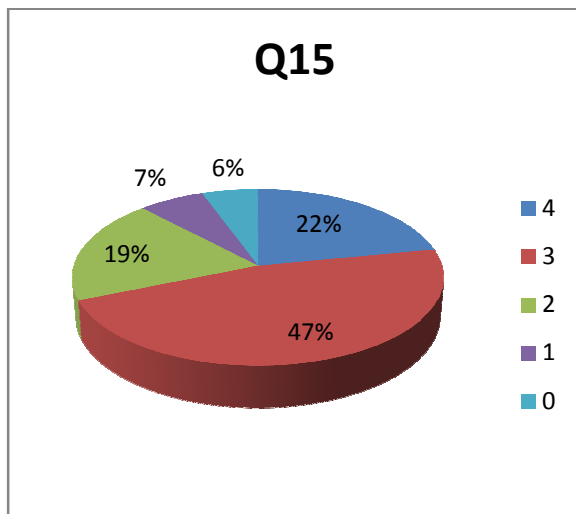
14. The institution provides multiple opportunities to learn and grow

		4	3	2	1	0
		Every time	Usually	Occasionally / Sometimes	Rarely	Never
<b>14</b>	Students	207	151	121	21	6
	%	40.90909	29.8419	23.91304	4.150198	1.185771



15. The overall quality of teaching-learning process in your institute is very good.

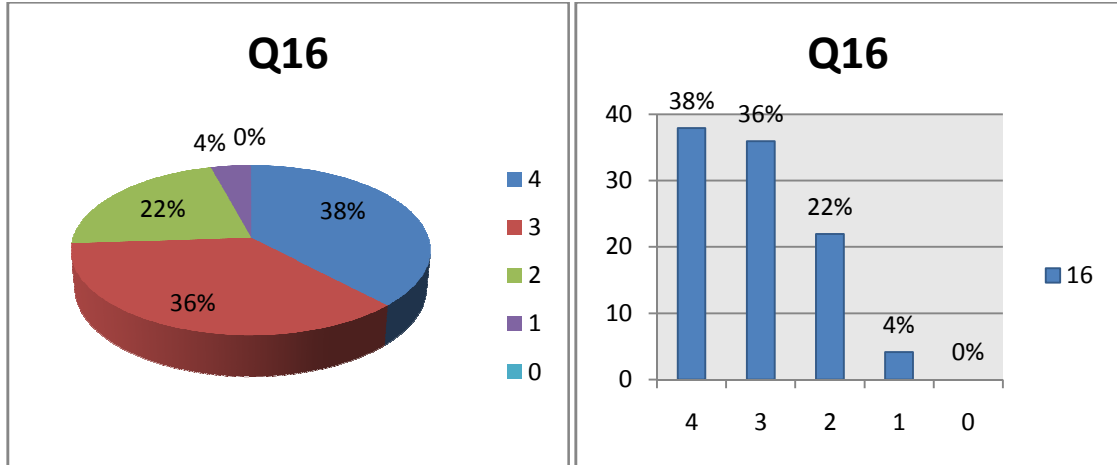
		4	3	2	1	0
		Strongly agree	Agree	Neutral	Disagree	Strongly Disagree
<b>15</b>	Students	111	237	97	33	28
	%	21.93676	46.83794	19.16996	6.521739	5.533597



16. The teacher's approach to teaching can best be described as

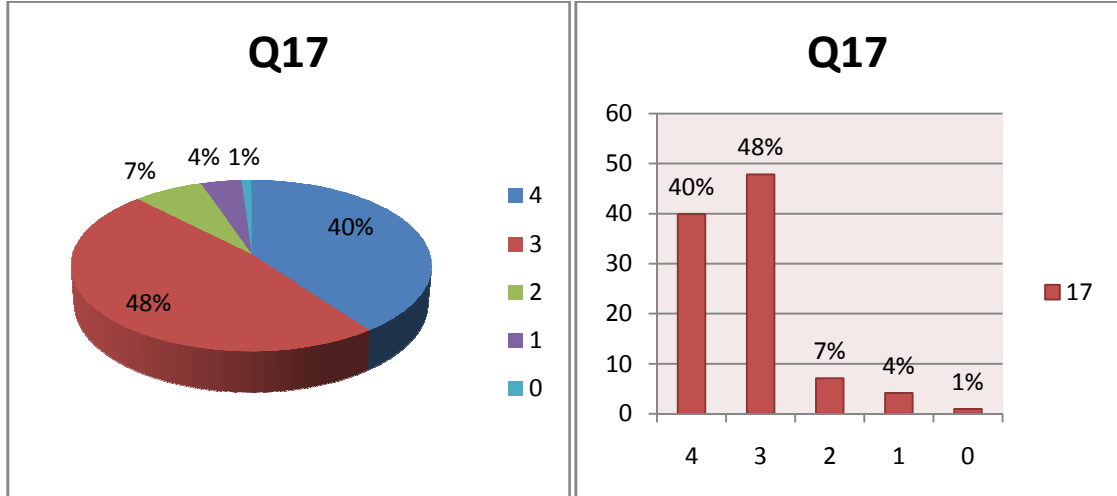
		4	3	2	1	0
		Moderate	Some what	Very Little	Not at all	To a great extent
<b>16</b>	Students	192	182	111	21	0
	%	37.94466	35.96838	21.93676	4.150198	0





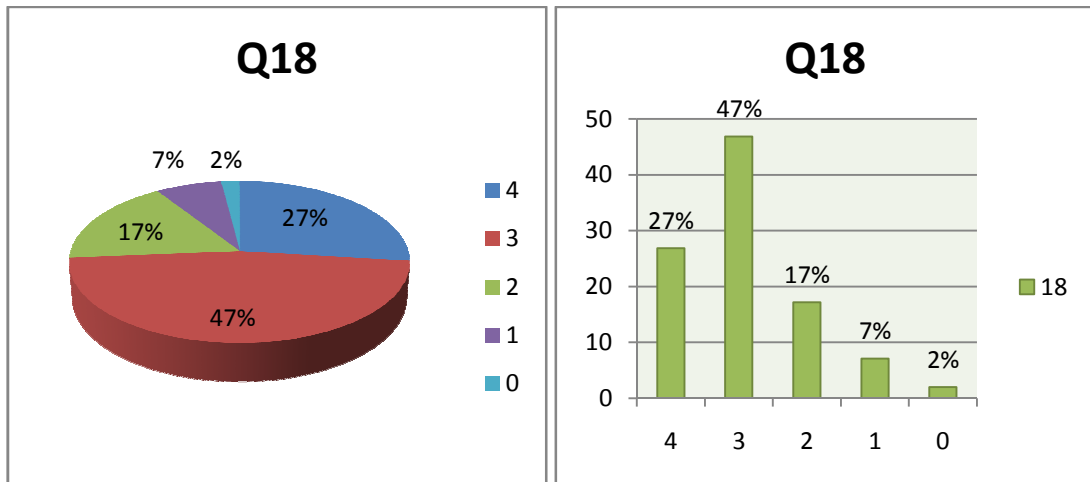
17. The teachers illustrate the concepts through examples and applications

		4	3	2	1	0
		Strongly Agree	Agree	Neutral	Disagree	Strongly Disagree
<b>17</b>	Students	202	242	36	21	5
	%	39.92095	47.82609	7.114625	4.150198	0.988142



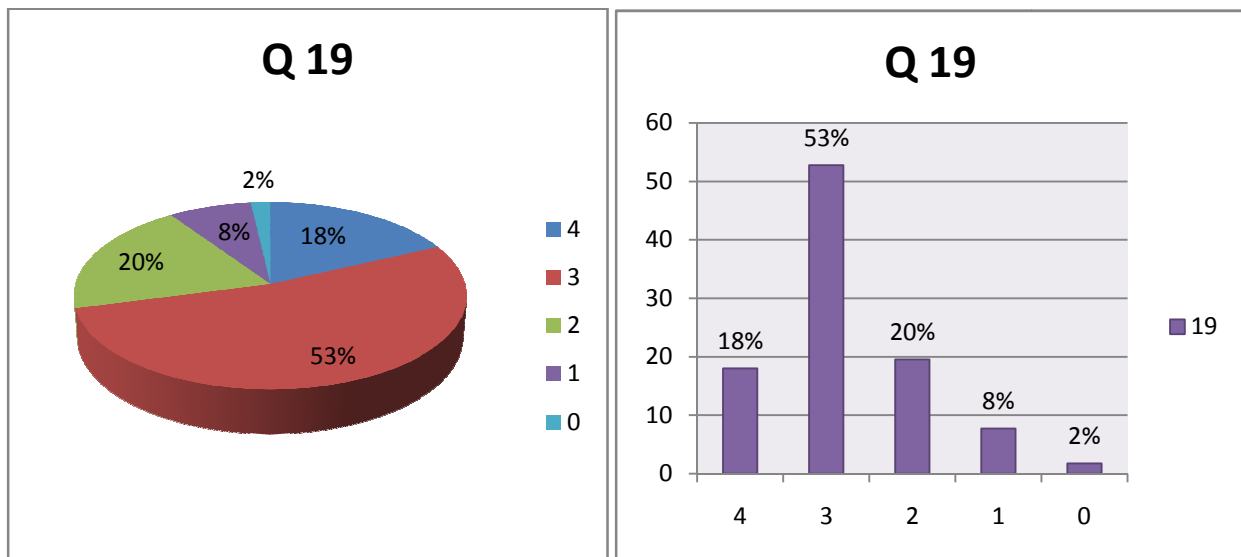
18. Was your performance in assignments discussed with you?

		4	3	2	1	0
		To a great extent	Moderate	Some what	Very Little	Not at all
<b>18</b>	Students	136	237	87	36	10
	%	26.87747	46.83794	17.19368	7.114625	1.976285



19. What percentage of teachers use ICT tools such as LCD projector, Multimedia, etc. while teaching.

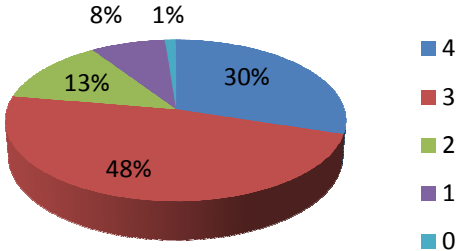
		4	3	2	1	0
		Above 90%	70-89%	50-69%	30-49%	Below 29%
19	Students	91	267	99	39	9
	%	17.98419	52.7668	19.56522	7.70751	1.778656



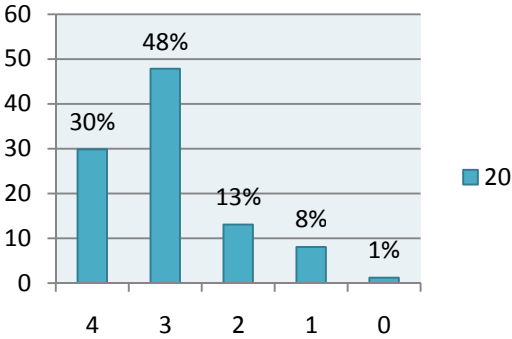
20. Your mentor does a necessary follow-up with an assigned task to you.

		4	3	2	1	0
		Strongly Agree	Agree	Neutral	Disagree	Strongly Disagree
20	Students	151	242	66	41	6
	%	29.8419	47.82609	13.04348	8.102767	1.185771

**Q20**



**Q20**





**KLE Society's**  
**P. C. Jabin Science College, Hubballi**  
**Autonomous College CPE - PHASE-III**  
**Re-accredited by NAAC at 'A' level with 3.43 CGPA**

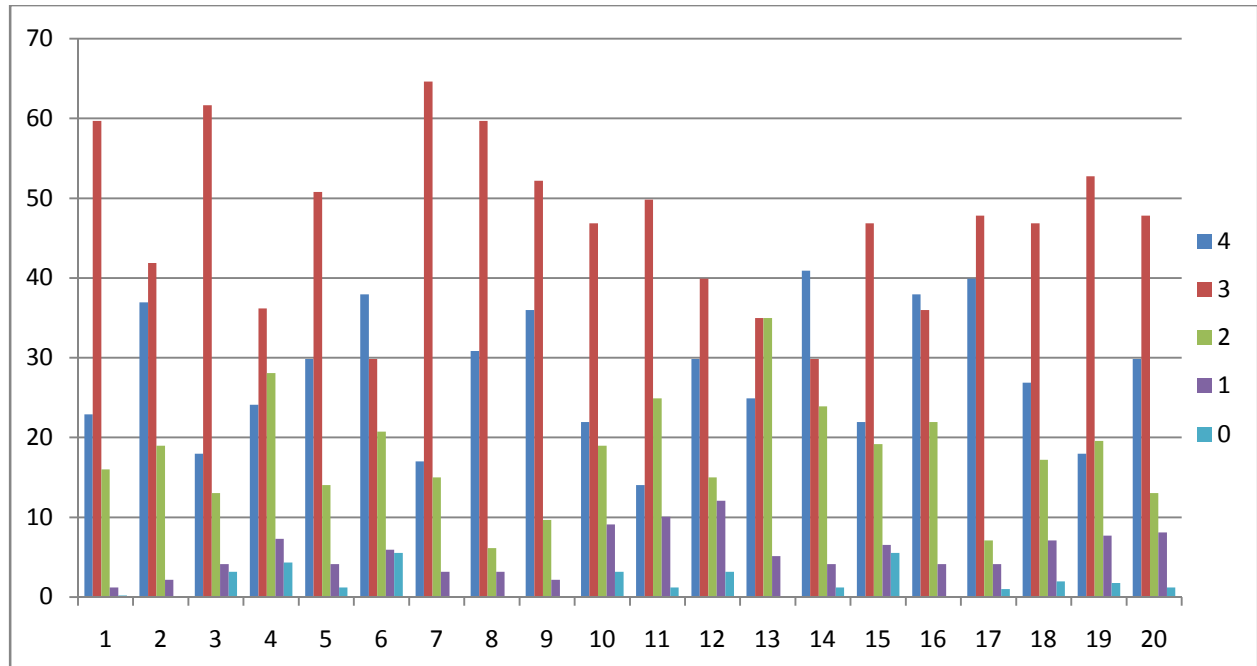
**Student Satisfaction Survey 2018-19**

<b>1</b>		<b>4</b>	<b>3</b>	<b>2</b>	<b>1</b>	<b>0</b>
		85 to 100%	70 to 84%	55 to 69%	30 to 54%	Below 30%
	Students	116	302	81	6	1
	%	22.9249	59.68379	16.00791	1.185771	0.197628
<b>2</b>		4	3	2	1	0
		Thoroughly	Satisfactorily	Poorly	Indifferently	Won't teach at all
	Students	187	212	96	11	0
	%	36.95652	41.89723	18.97233	2.173913	0
<b>3</b>		4	3	2	1	0
		Always effective	Sometimes effective	Just satisfactorily	Generally ineffective	Very poor communication
	Students	91	312	66	21	16
	%	17.98419	61.66008	13.04348	4.150198	3.162055
<b>4</b>		4	3	2	1	0
		Excellent	Very Good	Good	Fair	Poor
	Students	122	183	142	37	22
	%	24.11067	36.16601	28.06324	7.312253	4.347826
<b>5</b>		4	3	2	1	0
		Always fair	Usually fair	Sometimes unfair	Usually unfair	Unfair
	Students	151	257	71	21	6
	%	29.8419	50.79051	14.03162	4.150198	1.185771
<b>6</b>		4	3	2	1	0
		Every time	Usually	Occasionally	Rarely	Never

				/ Sometimes		
	Students	192	151	105	30	28
	%	37.94466	29.8419	20.75099	5.928854	5.533597
7		4	3	2	1	0
		Regura;y	Often	Sometimes	Rarely	Never
	Students	86	327	76	16	0
	%	16.99605	64.62451	15.01976	3.162055	0
8		4	3	2	1	0
		Significantly	Very well	Moderately	Marginally	Not at all
	Students	156	302	30	15	0
	%	30.83004	59.68379	6.126482	3.162055	0
9		4	3	2	1	0
		Strongly agree	Agree	Neutral	Disagree	Strongly disagree
	Students	182	264	49	11	0
	%	35.96838	52.17391	9.683794	2.173913	0
10		4	3	2	1	0
		Every time	Usually	occasional	Rarely	Never
	Students	111	237	96	46	16
	%	21.93676	46.83794	18.97233	9.090909	3.162055
11		4	3	2	1	0
		Every time	Usually	Occasionally / Sometimes	Rarely	I don't have a mentor
	Students	71	252	126	51	6
	%	14.03162	49.80237	24.90119	10.07905	1.185771
12		4	3	2	1	0
		Every time	Usually	Occasionally / Sometimes	Rarely	Never
	Students	151	202	76	61	16
	%	29.8419	39.92095	15.01976	12.05534	3.162055

13		4	3	2	1	0
		Fully	Reasonably	Partially	Slightly	Unable to
	Students	126	177	177	26	0
	%	24.90119	34.98024	34.98024	5.13834	0
14		4	3	2	1	0
		Every time	Usually	Occasionally / Sometimes	Rarely	Never
	Students	207	151	121	21	6
	%	40.90909	29.8419	23.91304	4.150198	1.185771
15		4	3	2	1	0
		Strongly agree	Agree	Neutral	Disagree	Strongly Disagree
	Students	111	237	97	33	28
	%	21.93676	46.83794	19.16996	6.521739	5.533597
16		4	3	2	1	0
	To a great extent	Moderate	Some what	Very Little	Not at all	To a great extent
	Students	192	182	111	21	0
	%	37.94466	35.96838	21.93676	4.150198	0
17		4	3	2	1	0
		Strongly Agree	Agree	Neutral	Disagree	Strongly Disagree
	Students	202	242	36	21	5
	%	39.92095	47.82609	7.114625	4.150198	0.988142
18		4	3	2	1	0
		To a great extent	Moderate	Some what	Very Little	Not at all
	Students	136	237	87	36	10
	%	26.87747	46.83794	17.19368	7.114625	1.976285
19		4	3	2	1	0
		Above 90%	70-89%	50-69%	30-49%	Below 29%
	Students	91	267	99	39	9
	%	17.98419	52.7668	19.56522	7.70751	1.778656
20		4	3	2	1	0

		Strongly Agree	Agree	Neutral	Disagree	Strongly Disagree
	Students	151	242	66	41	6
	%	29.8419	47.82609	13.04348	8.102767	1.185771





**KLE Society's**  
**P. C. Jabin Science College, Hubballi**  
**Autonomous College CPE - PHASE-III**  
**Re-accredited by NAAC at 'A' level with 3.43 CGPA**

## **Student Satisfaction Survey Report 2018-19**

Student Satisfaction Survey on curriculum, teaching learning and infrastructure was collected manually from 506 students and analysed by the feedback committee and reported to the head of the institute. Student feedback was rated on five point scale from 0 to 4. There were 20 objective and a subjective questions in the feedback questionnaire. Majority of the students were satisfied with the syllabus covered and the illustrations of teachers for explaining concepts through examples and applications. They also found teachers were fair enough in the internal evaluation process. The Teaching, Mentoring process, Academics, Placement and Library facilities, Social and Emotional growth were found to be satisfactory. Many of the students were satisfied with the teacher's identification of students' strengths and weaknesses to encourage them by providing right level of challenges. The students' feedback also demonstrates that the institution makes effort regularly to engage them in the monitoring, review and continuous quality improvement of the teaching learning process and also to inculcate the soft skills, life skills, and employability skill at global level competency.

However, the Principal and Management informed the faculty even to attend the following suggestions given by few of the students for the overall improvisation in the performance of the institution;

- Cover the prescribed syllabus of respective classes and complete within the stipulated period.
- Thorough preparation for the class to the student satisfaction and inculcate ICT based teaching.
- Develop the effective communication skill for the class room interventions.
- Practice student centric methods of teaching and learning.
- Internal and assignment evaluation should be fair and transparent.
- Organize regularly internship, student exchange programme, field study industrial visits etc.
- Keep track of mentoring system and identify the strength of every student and encourage them by providing correct suggestions for the challenges.
- Educate the students regarding competencies, course outcome and programme outcome.
- Principal and Management regularly monitoring on quality improvement of teaching learning evaluation process of the institute.



- To the maximum extent use student centric methods, such as experimental, participative learning and problem solving methodology for exchanging the learning experiences.
- Encourage the students to participate in extracurricular activities.
- Maximum effort to inculcate the soft skill, life skill, employability skill at global level competent.

The following suggestions are given by students for the quality teaching learning process of the institute.

- Use of advanced ICT based teaching.
- Application oriented teaching
- Guidance and workshops on competitive exams like JAM, PG CET, and PG entrance.