



K.L.E Society's
P.C.JABIN SCIENCE COLLEGE, HUBBALLI
Autonomous, CPE Phase-III
Reaccredited by NAAC at 'A' level
Student Satisfactory Survey Report 2017-18

Annually the college conducts Students Satisfactory Survey on overall institutional performance in a structured questionnaire designed by the NAAC. The survey comprises of students satisfaction on curriculum and teaching learning. Curriculum and teaching learning process designed by the autonomous college.

1. A random survey on a structured questionnaire was taken manually. On the analysis of the survey there was a satisfactory outcome. Based on the analysis, students are highly satisfied with the design of the curriculum having need based, relevant skill based and employable.
2. The process of teaching and learning is student centric and students highly appreciate the regular and timely engaging and delivery of lectures.
3. Majority of the students felt faculties were well communicative in the classroom.
4. The transparent evaluation process is the core value of the college. Students always feel comfortable and satisfied in the fairness of the process of evaluation.
5. As field visits and industrial visits are part of curriculum students express happiness and attend such events regularly.
6. Based on the survey reasonably, the faculty identifies the student strength, ability and teach for concept clarification. Extra care is also taken by the faculty on regularly basis.
7. The student survey depicts a well defined mentoring system in solving overall problems of student and does a fallow up actions for all the tasks and grievances. It was strongly expressed by the students that they are given an importance in the academic reviews and participation in quality moment encouraged to organised and participated quality melas and the faculty engages the student by various pedagogies. Majority of faculty use ICT based teaching.

8. To a great extent the students opined that the college is extending to undertake courses involving soft skills and different kinds of skill for global competence.
9. Based on the survey, it was concluded by students that the excellent process of teaching learning is in practice.

The minor suggestions made by students in the survey are discussed in the area of providing

- i) Facilities for competitive examinations.
- ii) Adoption of the research and intership culture among students.
- iii) Enhance industry linkage.

These shortfalls are discussed by the Principal and Management and corrective majors are suggested.


PRINCIPAL
P. C. JABIN SCIENCE COLLEGE.
031 - 530 031



K.L.E Society's
P.C.JABIN SCIENCE COLLEGE, HUBBALLI

Autonomous, CPE Phase-III

Reaccredited by NAAC at 'A' level

SSS Rating Analysis For The Year 2017-18

Sl.No	Questionnaires	Rating in percentage (%)				
		4	3	2	1	0
1	How much of the syllabus was covered in the class?	36.44	51.69	7.62	4.23	0
2	How well did the teachers prepare for the classes?	11.86	86.44	1.69	0	0
3	How well were the teachers able to communicate?	22.03	53.39	23.72	0.84	0
4	The teachers approach to teaching can best be described as	6.77	45.76	44.06	3.38	0
5	Fairness of the internal evaluation processes by the teachers	23.72	54.23	17.79	0.84	0
6	Was your performance in assignments discussed with you	7.62	50	22.03	18.64	1.69
7	The institute takes active interest in promoting internship, student exchange, field visit opportunities for students.	21.18	21.18	31.35	11.01	13.55
8	The teaching and mentoring process in your institution facilitates you in cognitive, social and emotional growth.	11.01	40.67	35.59	11.01	1.69
9	The institution provides multiple opportunities to learn and grow.	7.62	49.15	38.13	2.54	0
10	Teachers inform you about your expected competencies, course outcomes and programme outcomes.	21.18	43.22	22.03	10.16	3.38
11	Your mentor does a necessary follow-up with an assigned task to you.	27.11	36.44	22.88	7.62	5.93
12	The teachers illustrate the concepts through examples and application	27.11	50	12.71	6.77	0
13	The teachers identify your strengths and encourage you with providing right level of challenges.	22.03	33.05	25.42	15.25	4.23
14	Teachers are able to identify your weaknesses and help you to overcome them.	19.49	31.35	23.72	12.71	5.08
15	The institution makes effort to engage students in the monitoring, review and continuous quality improvement of the teaching learning process.	7.62	45.76	39.83	1.69	1.69


 PRINCIPAL
 P.C. JABIN SCIENCE COLLEGE
 HUBBALLI - 580 031

16	The institute/ teachers use student centric methods, such as experiential learning, participative learning and problem solving methodologies for enhancing learning experiences	9.32	46.61	22.03	11.01	11.01
17	Teachers encourage you to participate in extracurricular activities	17.79	52.54	24.57	3.38	1.69
18	Efforts are made by the institute/ teachers to inculcate soft skills, life skills and employability skills to make you ready for the world of work.	11.86	46.61	21.18	17.79	0
19	What percentage of teachers use ICT tools such as LCD projector, Multimedia, etc. while teaching.	21.18	50	22.88	5.084	0.847
20	The overall quality of teaching-learning process in your institute is very good.	15.25	51.69	33.05	0	0


PRINCIPAL
P.C. JABIN SCIENCE COLLEGE
HUBLI - 580 031



K.L.E. SOCIETY'S
P.C. JABIN SCIENCE COLLEGE,
VIDYANAGAR, HUBBALLI-580031.
AUTONOMOUS COLLEGE
CPE-CONTINUATION PHASE-III
Re-Accredited by NAAC at 'A' Level with 3.43 CGPA

Student Satisfaction Survey on Teaching Learning Process 2017-18

1. How much of the syllabus was covered in the class?
 - 4 – 85 to 100%
 - 3 – 70 to 84%
 - 2 – 55 to 69%
 - 1– 30 to 54%
 - 0 –Below 30%
2. How well did the teachers prepare for the classes?
 - 4 –Thoroughly
 - 3 – Satisfactorily
 - 2 – Poorly
 - 1 – Indifferently
 - 0 – Won't teach at all
3. How well were the teachers able to communicate?
 - 4 – Always effective
 - 3 – Sometimes effective
 - 2 – Just satisfactorily
 - 1– Generally ineffective
 - 0– Very poor communication
4. The teacher's approach to teaching can best be described as
 - 4– Excellent
 - 3 – Very good
 - 2 – Good
 - 1 – Fair
 - 0– Poor

5. Fairness of the internal evaluation process by the teachers.
 - 4 – Always fair
 - 3 – Usually fair
 - 2 – Sometimes unfair
 - 1 – Usually unfair
 - 0– Unfair
6. Was your performance in assignments discussed with you?
 - 4 – Every time
 - 3 – Usually
 - 2 – Occasionally/Sometimes
 - 1 – Rarely
 - 0– Never
7. The institute takes active interest in promoting internship, student exchange, field visit opportunities for students.
 - 4 – Regularly
 - 3 – Often
 - 2 – Sometimes
 - 1 – Rarely
 - 0– Never
8. The teaching and mentoring process in your institution facilitates you in cognitive, social and emotional growth.
 - 4 – Significantly
 - 3 – Very well
 - 2 – Moderately
 - 1 – Marginally
 - 0– Not at all
9. The institution provides multiple opportunities to learn and grow.
 - 4 – Strongly agree
 - 3 – Agree
 - 2 – Neutral
 - 1 – Disagree
 - 0– Strongly disagree

10. Teachers inform you about your expected competencies, course outcomes and programme outcomes.
 - 4 – Every time
 - 3 – Usually
 - 2 – Occasionally/Sometimes
 - 1 – Rarely
 - 0 – Never
11. Your mentor does a necessary follow-up with an assigned task to you.
 - 4 – Every time
 - 3 – Usually
 - 2 – Occasionally/Sometimes
 - 1 – Rarely
 - 0 – I don't have a mentor
12. The teachers illustrate the concepts through examples and applications.
 - 4 – Every time
 - 3 – Usually
 - 2 – Occasionally/Sometimes
 - 1 – Rarely
 - 0 – Never
13. The teachers identify your strengths and encourage you with providing right level of challenges.
 - 4 – Fully
 - 3 – Reasonably
 - 2 – Partially
 - 1 – Slightly
 - 0 – Unable to
14. Teachers are able to identify your weaknesses and help you to overcome them.
 - 4 – Every time
 - 3 – Usually
 - 2 – Occasionally/Sometimes
 - 1 – Rarely
 - 0 – Never

15. The institution makes effort to engage students in the monitoring, review and continuous quality improvement of the teaching learning process.
- 4 – Strongly agree
 - 3 – Agree
 - 2 – Neutral
 - 1 – Disagree
 - 0 – Strongly disagree
16. The institute/ teachers use student centric methods, such as experiential learning, participative learning and problem solving methodologies for enhancing learning experiences.
- 4 – To a great extent
 - 3 – Moderate
 - 2 – Some what
 - 1 – Very little
 - 0 – Not at all
17. Teachers encourage you to participate in extracurricular activities.
- 4 – Strongly agree
 - 3 – Agree
 - 2 – Neutral
 - 1 – Disagree
 - 0 – Strongly disagree
18. Efforts are made by the institute/ teachers to inculcate soft skills, life skills and employability skills to make you ready for the world of work.
- 4 – To a great extent
 - 3 – Moderate
 - 2 – Some what
 - 1 – Very little
 - 0 – Not at all
19. What percentage of teachers use ICT tools such as LCD projector, Multimedia, etc. while teaching.
- 4 – Above 90%
 - 3 – 70 – 89%
 - 2 – 50 – 69%
 - 1 – 30 – 49%
 - 0 – Below 29%

20. The overall quality of teaching-learning process in your institute is very good.

4 – Strongly agree

3 – Agree

2 – Neutral

1 – Disagree

0 – Strongly disagree

21. Give three observation / suggestions to improve the overall teaching – learning experience in your institution.

a)

b)

c)


Convenor


Principal



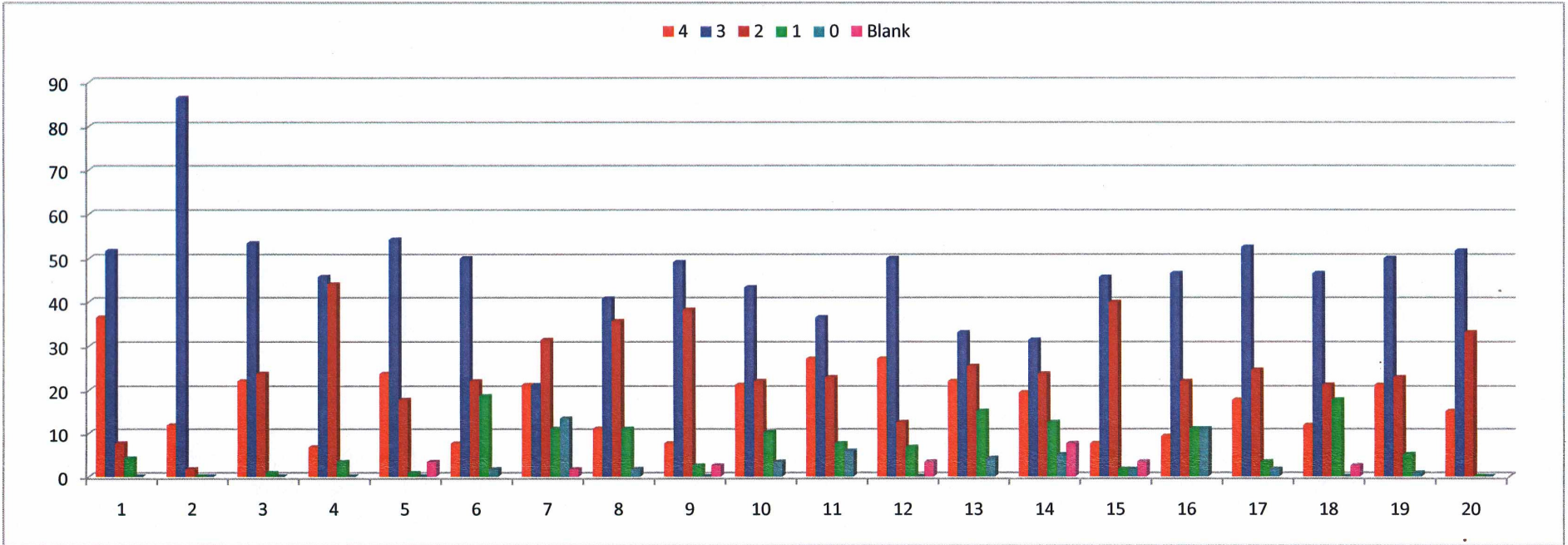
K.L.E. SOCIETY'S
P.C. JABIN SCIENCE COLLEGE,
VIDYANAGAR, HUBBALLI-580031.
AUTONOMOUS COLLEGE
CPE-CONTINUATION PHASE-III
Re-Accredited by NAAC at 'A' Level with 3.43 CGPA

Student Satisfaction Survey on Teaching Learning Process Analysis 2017-18

	1	2	3	4	5	6	7	8	9	10	11	12	13	14	15	16	17	18	19	20	21
4	43	14	26	8	28	9	25	13	9	25	32	32	26	23	9	11	21	14	25	18	
3	61	102	63	54	64	59	25	48	58	51	43	59	39	37	54	55	62	55	59	61	
2	9	2	28	52	21	26	37	42	45	26	27	15	30	28	47	26	29	25	27	39	0
1	5	0	1	4	1	22	13	13	3	12	9	8	18	15	2	13	4	21	6	0	0
0	0	0	0	0	0	2	16	2	0	4	7	0	5	6	2	13	2	0	1		
Blank					4		2		3			4		9	4			3			

Student Satisfaction Survey on Teaching Learning Process Analysis 2017-18 – Percentage wise

	1	2	3	4	5	6	7	8	9	10	11	12	13	14	15	16	17	18	19	20
4	36.44	11.86	22.03	6.77	23.72	7.62	21.18	11.01	7.62	21.18	27.11	27.11	22.03	19.49	7.62	9.32	17.79	11.86	21.18	15.25
3	51.69	86.44	53.39	45.76	54.23	50	21.18	40.67	49.15	43.22	36.44	50	33.05	31.35	45.76	46.61	52.54	46.61	50	51.69
2	7.62	1.69	23.72	44.06	17.79	22.03	31.35	35.59	38.13	22.03	22.88	12.71	25.42	23.72	39.83	22.03	24.57	21.18	22.88	33.05
1	4.23	0	0.84	3.38	0.84	18.64	11.01	11.01	2.54	10.16	7.62	6.77	15.25	12.71	1.69	11.01	3.38	17.79	5.084	0
0	0	0	0	0	0	1.69	13.55	1.69	0	3.38	5.93	0	4.23	5.08	1.69	11.01	1.69	0	0.847	0
Blank					3.38		1.69		2.54			3.38		7.62	3.38			2.54		



[Handwritten Signature]
 Conventor

[Handwritten Signature]
 Principal